

Acesonic®

The Leader in Professional Sing-Along Equipment

KM-201

WWW.ACESONIC.COM

HDMI Karaoke Mixer

with Professional-Grade YAMAHA® Reverb Technology



USER MANUAL

Table of Contents

Unpacking and Installation	1
Important Safety Instructions	1
Front and Rear Panel Descriptions	2
Features and Specifications	3
Troubleshooting	4
Desktop Connection	5

DVD Player and TV Connection	6
HDMI Amplifier and Laptop Connection	7
Blu-ray Disc™ Player and HDTV Connection	8
Mobile Devices Connection	9
FCC Advisory and Safety Warnings	10

Unpacking

Although your KM-201 is neither complicated nor difficult to operate, it is recommended you take a few minutes to read this brief manual and familiarize yourself with the important information regarding product features, setup and operation.

Installation

Never place this product in an environment which could alter its performance or reduce its service life. Such environments usually include high levels of heat, dust, moisture, and vibration.

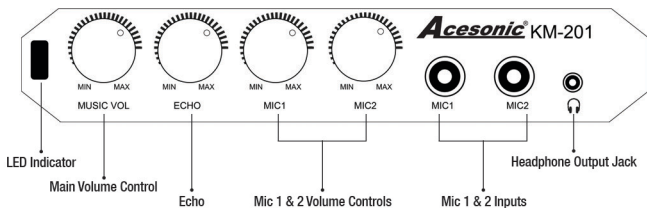
Important Safety Instructions

- Do not use this device near water.
- Do not install near any heat sources such as radiators, heat registers, stoves, or other devices that produce heat.
- Do not defy the safety purpose of the polarized grounding-type plug. A polarized plug has two blades with one wider than the other. A grounding-type plug has two blades and a third grounding prong. The wide blade or third prong is provided for your safety. If the provided prong does not fit your outlet, consult an electrician for possible replacement of obsolete outlet.
- Protect the power cord from being walked on or pinched, particularly at plugs, receptacles and/or the point where they exit from the device.
- Only use attachments/ accessories specified or included.
- Unplug this device during lightning storms or when not in use for prolonged periods.
- Refer any/all servicing to quality service center or personnel. Servicing is required when the device has been damaged to a point of malfunction, such as liquid spillage, exposure to rain, moisture, excessive heat or dropping of the device.

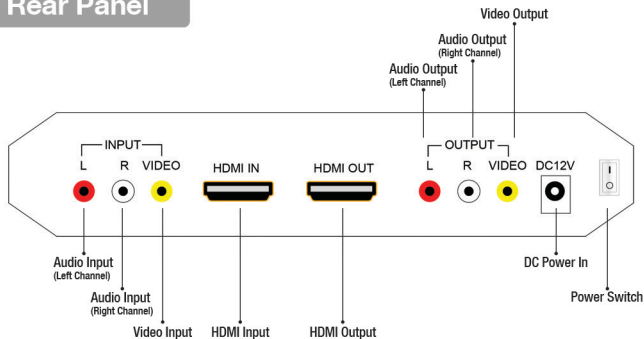
Functions

Using the professional-grade YAMAHA® reverb chipset, create a perfect mix between microphone vocals and accompanying sound (music).

Front Panel



Rear Panel



Features

- Professional echo process with professional grade Yamaha® Reverb technology.
- Perfectly blends microphone voice and the accompaniment.
- The Echo effect can be adjusted depending on the occasion and your preferences, making your voice sound clear with minimal noise and distortion.
- Digital-to- Analog converter enables you to input via HDMI and output HDMI and L/R RCA Audio together.
- Dual microphone interface with individual volume control supports a chorus or duets.
- Support for various video-chat clients.
- Support for streaming tube websites and software apps.
- RCA to RCA mixer.
- Supported Inputs
 - ❖ Smartphones
 - ❖ Tablets
 - ❖ STB
 - ❖ DVD
 - ❖ HD Players
 - ❖ Blu-ray Discs
 - ❖ PC / Laptops
 - ❖ Game systems i.e. Xbox, PS4, etc...
 - ❖ HDMI or RCA Inputs
- Supported Outputs
 - ❖ TV
 - ❖ Monitor Speakers
 - ❖ Amplifiers
 - ❖ HDMI and RCA Output

Product Specifications

- YAMAHA® chipset
- HDMI Input and Output
- RCA Input and Output
- Adjustable Echo
- Two ¼" Microphone Input Jacks
- 3.5mm Headphone Jack
- Frequency Response: 40Hz - 16KHz
- Dimensions: 6.8" W x 1.57" H x 4.33" D
- Distortion: 1.8% MAX
- Working Temperature: -30°C ~ 65°C
- Working Voltage: DC12V
- Working Hours: Unlimited
(power off recommended when not in use)

Caution

Keep HDMI cable within 15' length for the most optimal signal communication.

Accessories

- User Manual
- 12V DC 0.5A Adaptor

About Microphone Usage

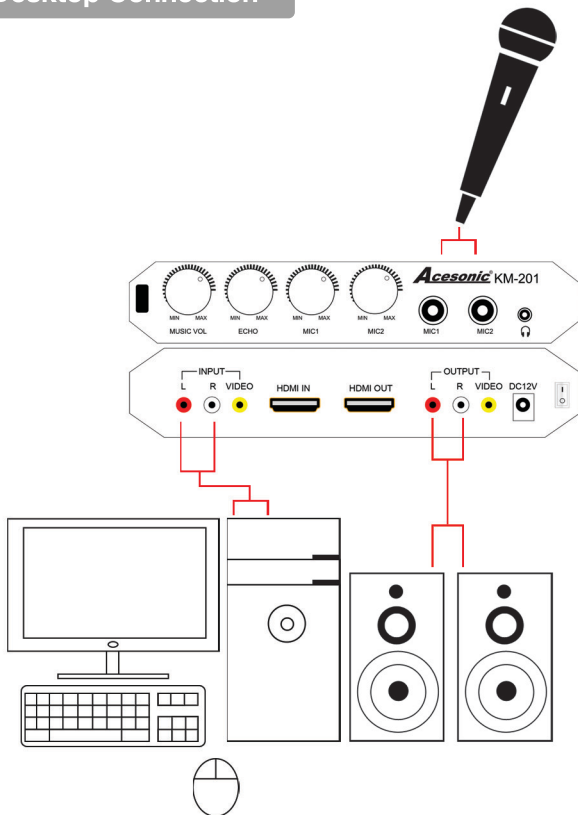
It is recommended to keep microphone approximately 6" distance away from you when singing.

Troubleshooting

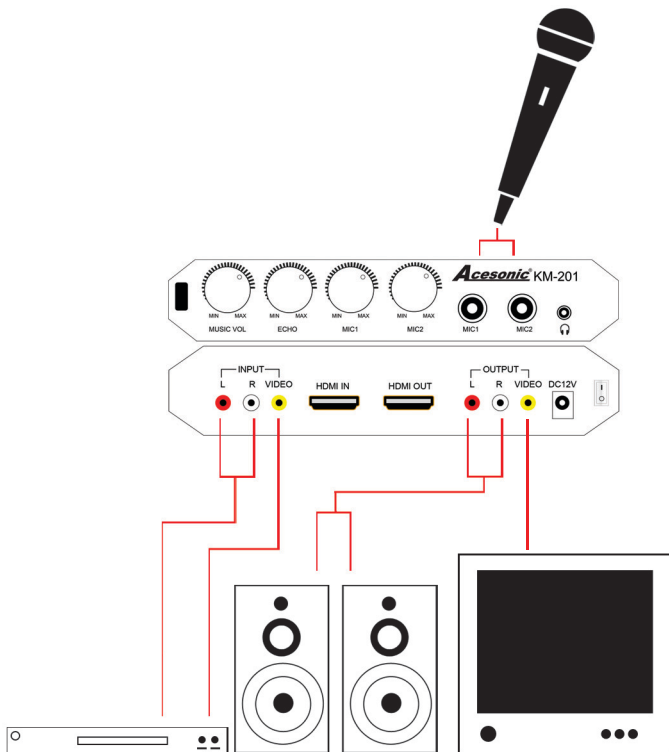
If you are having problems operating the KM-201 unit, or suspect something is wrong with it, please check the troubleshooting list below to resolve any issues of incorrect operation. If you suspect an equipment malfunction and are unable to resolve the problem, please contact the Acesonic service center at (626) 820-0645 or send an e-mail to techsupport@acesonic.com.

PROBLEM	POSSIBLE CAUSE(S)
No light on Power Indicator	Check the Power Adaptor and Cable
Power Indicator is lit, but no sound is present.	Check source device and disable any mute settings.
Sound is harsh or distorted.	<ul style="list-style-type: none"> • Reduce Source Volume • Change placement angle between Mic and Speaker • Change distance between Mic and Speaker

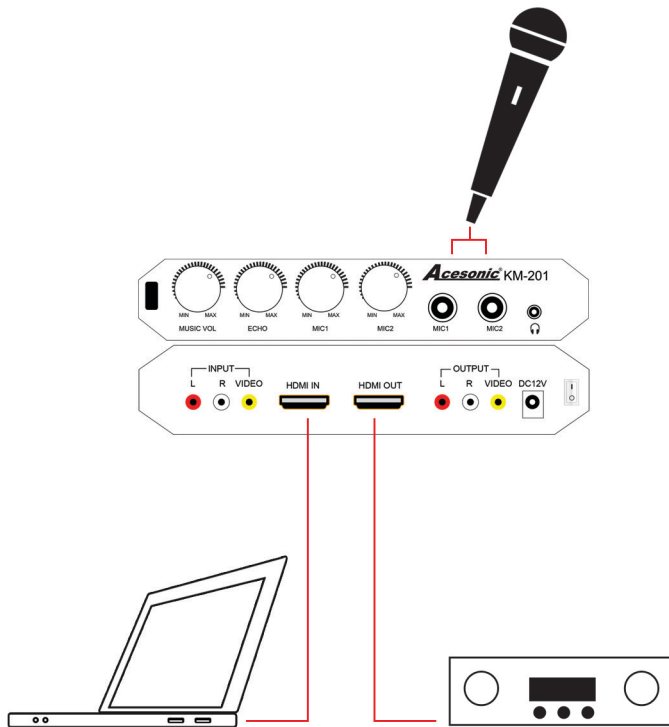
Desktop Connection



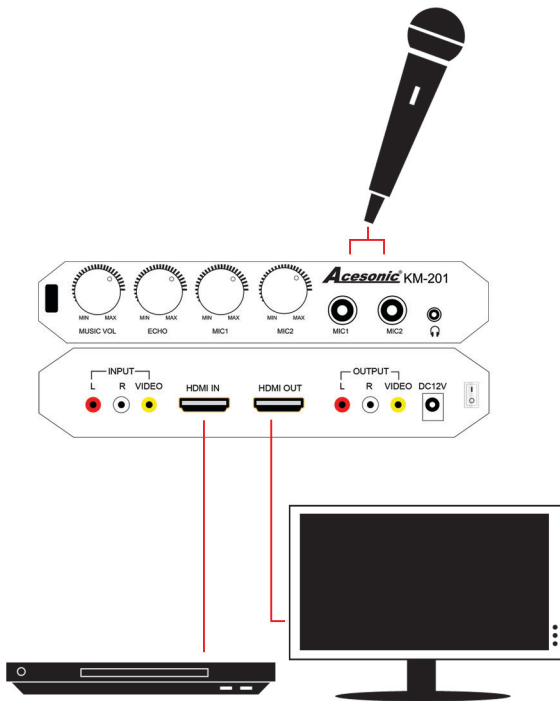
DVD Player and TV Connection



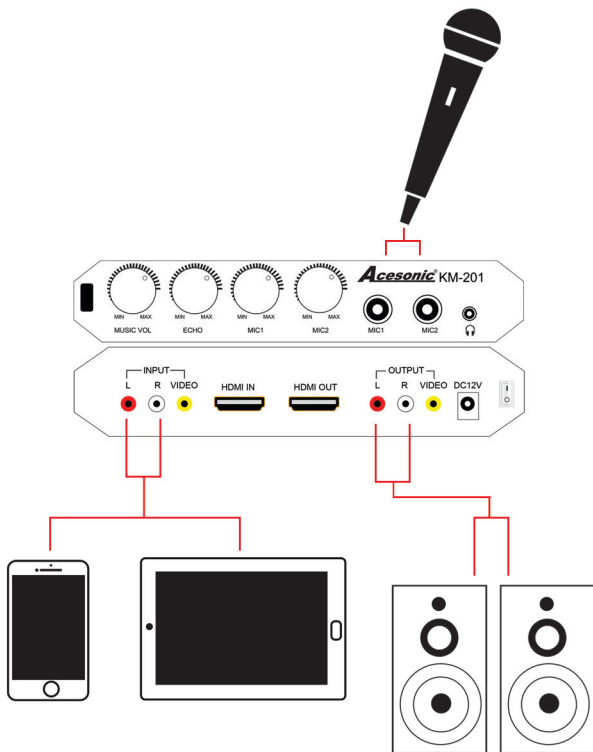
HDMI Amplifier and Laptop Connection



Blu-ray Disc™ Player and HDTV Connection



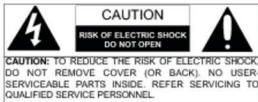
Mobile Devices Connection



FCC Advisory and Safety Warnings

Mises en garde, précautions et procédures de sûreté

The lightning-with-arrowhead symbol inside a triangle alerts the user that potentially dangerous voltage in the product enclosure may constitute a risk of electric shock.



The exclamation point within a triangle alerts the user to important operating, maintenance, and servicing information in this User Manual.

CAUTION

To reduce the risk of electrical shocks, fire and possible injuries, you should not

- remove screws, buttons, antennae, jacks or any part of the enclosure; or
- expose the product to rain or moisture.

FCC ADVISORY (U.S.A.)

1. This equipment has been tested and found to comply with the limits for a Class B digital device, pursuant to part 15 of the FCC Rules. These limits are designed to provide reasonable protection against harmful interference in a residential installation.

This equipment generates, uses and can radiate radio frequency energy and, if not installed and used in accordance with the instructions, may cause harmful interference to radio communications. However, there is no guarantee that interference will not occur in a particular installation. If this equipment does cause harmful interference to radio or television reception, which can be determined by turning the equipment off and on, the user is encouraged to try correcting the problem by one or more of the following measures:

- Increasing the distance between the radio/TV equipment and the KM-201
 - Connecting the radio/TV equipment to an outlet on a different circuit than the one into which the receiver is plugged.
 - If necessary, consulting the dealer or an experienced radio/TV technician for help.
2. **IMPORTANT:** When connecting the KM-201 to audio equipment, use only high-quality, shielded cables such as what is supplied with this product. Follow all installation instructions and do not modify the equipment in any way, as this could void your FCC authorization to use the device in the U.S.

FOR CANADA/POUR LE CANADA**Caution**

To prevent electric shock, match the wide blade of the plug to the wide slot, and fully insert.

Attention

Pour éviter les chocs électriques, introduire la lame la plus large de la fiche dans la borne correspondante de la prise et pousser jusqu'au fond.

This product does not exceed the Class B limits for radio noise emissions from digital devices as set out in the Canadian standard for interference-causing equipment

("Digital Apparatus, ICES-003" from the Department of Communications).

Cet appareil numérique respecte les limites de bruits radio électriques applicables aux appareils numériques de Classe B prescrites dans la norme sur le matériel brouilleur ("Appareils Numériques, NMB-003" édictée par le Ministre des Communications).

KM-201**HDMI Karaoke Mixer****One (1) Year Manufacturer Warranty****Lifetime Technical Support****Designed in the U.S.A.****Technical Support: (626) 820-0645****techsupport@acesonic.com****Website: www.acesonic.com****Acesonic USA, Inc.****161 S. 8th Avenue,****City of Industry,****CA 91746-3208****U.S.A.**

©2014 All Rights Reserved. Acesonic USA, Inc.