

DYNAMIC SOUND & VISUAL EXPERIENCE

MAGICSING USER'S MANUAL



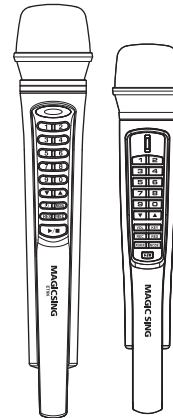
ALL-IN-ONE KARAOKE

ET9K

VER.100

Thank you for your purchase

Please read this carefully before using your MAGICSING.



Thank you for purchasing Enter Tech's MagicSing.
Bring your family and friends together,
and enjoy singing with MagicSing!

User's Manual | ET9K
VER.100

CONTENTS

Chapter 01. Introduction

Specifications	01-01
Basic Items	01-02
Optional Items	01-03

Chapter 02. How to Set up your MAGICISING

How to connect to a TV	02-01
How to connect to a TV & Stereo (Sound system)	02-01

Chapter 03. Functions and Settings

ET9K Main Karaoke Key Buttons	03-01
Recording & Recording Pack	03-02
Song Search	03-03
My-Mic	03-04
Theme	03-05
Multiplex (RSM)	03-06
Musical Notation (Key Note Guide)	03-07
Game	03-08
Configuration Menu	03-09

Chapter 04. Optional Items

Wireless Duet Karaoke	04-01
Recording Pack	04-02
Additional Song Pack	04-03

Chapter 05. Additional Information

Precautions	05-01
Troubleshooting	05-02

Chapter.01 - Introduction

SPECIFICATIONS

ET9K MAIN KARAOKE

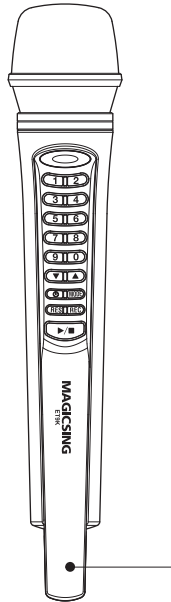
· Model NO.	ET9K
· Sound Engine	CT500
· Dimension	45(W) x 45(H) x 260(D) mm
· Weight	478g (Including Cable)
· TV Channel	Video Channel (NTSC / PAL)
· Audio Output	Stereo Line Out(Full scale Output) : 2Vrms
· Image Color	True Color / 720 x 480 (Interface) / 720 x 576 (Interface)
· Overflow (Under 10V)	Built-in Protection Circuit for Reverse Voltage
· Operating Temperature	0°C ~ 60°C
· Power supply	AC adaptor (DC 8V~9V / 550mA~650mA)

WIRELESS DUET(SUB) KARAOKE

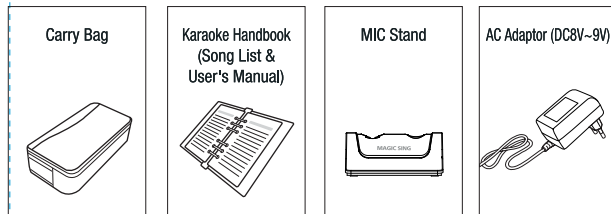
· Model No	EX 180 / EX 186 / EX 190
· Dimensions	43(W) x 252(H) x 43(D) mm
· Weight	175g (without the batteries)
· Power Supply	1.5V (AA) x 2 ea
· Battery life	Approximately 10hs.
· Power Consumption	70mA / 210mW
· RF Power	Below 10mW
· Modulation	FM (808, 864, 904MHz)
· Effective Distance (transmission)	5~7M

Introduction - Chapter.01

BASIC ITEMS



ET9K MAIN KARAOKE

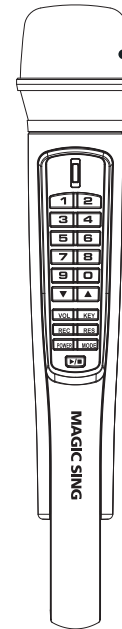


BASIC ITEMS

- ET9K Main Karaoke
- Karaoke Handbook (Song list & User's Manual)
- AC Adaptor (DC8V~9V)
- Carry Bag
- Mic Stand

Chapter.01 - Introduction

OPTIONAL ITEMS



Wireless Duet Karaoke

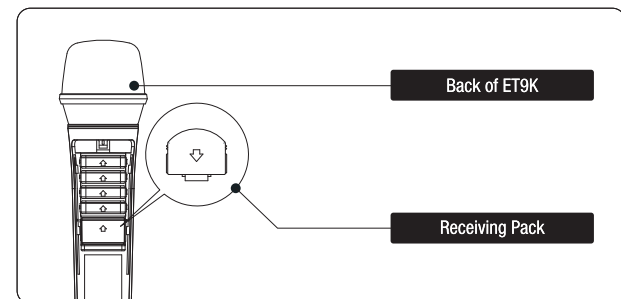
Enhance the fun with a wireless sub karaoke. (Refer to Chapter. 04-01)

Additional Song Pack

You can add additional song pack. (Refer to Chapter.04-03)

Recording Pack

You can record your own singing. (Refer to Chapter.04-02)



Back of ET9K

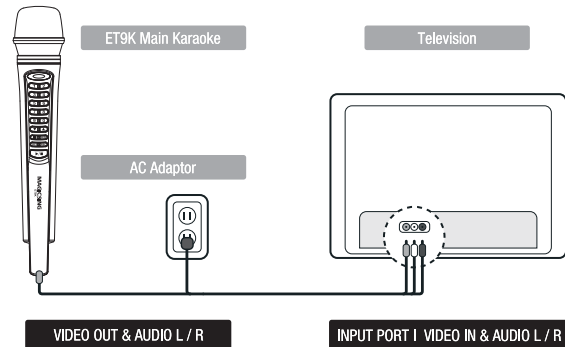
Receiving Pack

OPTIONAL ITEMS

- Wireless Duet Karaoke (with a Receiving Pack)
- Recording Pack
- Car Adaptor
- Additional Song Pack

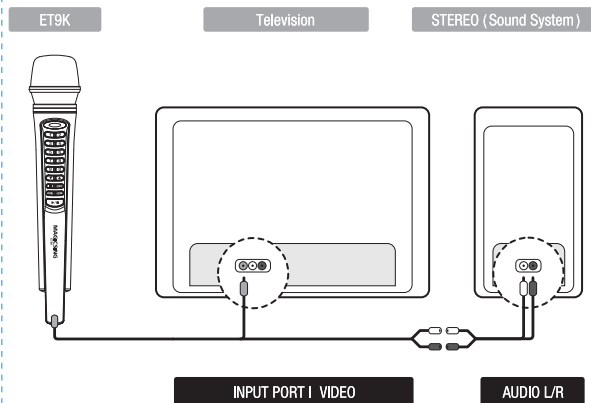
How to Set up your MAGICSING - Chapter.02

HOW TO CONNECT TO A TV



Connect the Audio / Video cable to the RCA jack terminal on your TV, as shown above. If there are only two RCA jack terminals on your TV (mono TV), connect the yellow jack (male) to the yellow RCA jack terminal and connect the white jack (male) to the other RCA jack terminal of your TV.

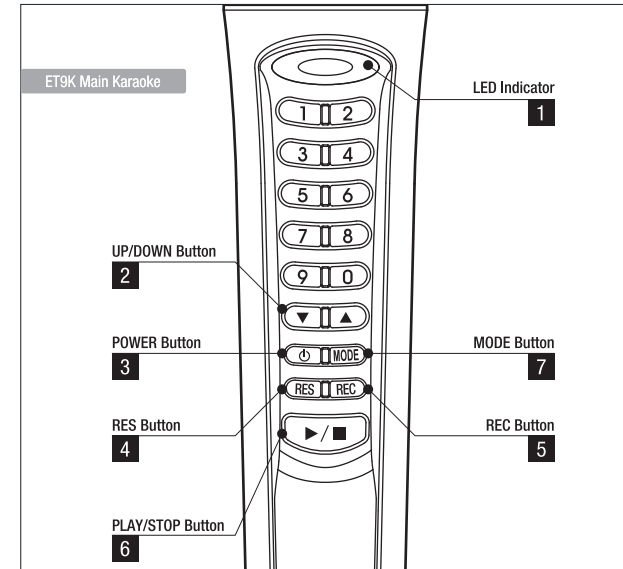
HOW TO CONNECT TO A TV & STEREO (SOUND SYSTEM)



Connect AV Cable (yellow jack) to the (Video In) yellow RCA jack terminal in your TV as shown above. Then, connect the red jack and white jack to the (Audio In) RCA jack terminal in your stereo.

Chapter.03 - Functions & Settings

ET9K MAIN KARAOKE KEY BUTTONS



1 LED INDICATOR

A blue light indicates the ET9K is turned on and ready for use. No light means that the mic is turned off.

2 UP/DOWN BUTTON

- Press [▼], [▲] to scroll through the on-screen list of songs.
- Depending on the function being accessed, [▼], [▲] can be used to increase / decrease the level of key, tempo, melody, mic volume, echo, etc. or to move up & down possible options in the menu.
- When you select a function, it can be used together with the [MODE] button.

3 POWER BUTTON

- Turns on or off the mic.
- Press [POWER] slightly to turn it on.
- Press [POWER] for 3 seconds to turn it off.
- When there is no input signal within 10 minutes, the power will be turned off automatically.

4 RESERVATION BUTTON



- Please select a song by pressing [▼] or [▲], then press [RES] to reserve the song. (The song number will be displayed on the screen under the “Reserved” menu.)
- Press [MODE] twice to exit the reservation list and go back to the on-screen list by pressing [▼], [▲].
- In case you want to delete a reserved song, select that song in the “reserved” list and press [RES] again.
- You can reserve up to 100 songs, but only 4 songs with their respective numbers will appear on a blue bar on the upper portion of the screen.

5 RECORD BUTTON



- Choose / select a song first before recording.
- Press [MODE + REC] to start recording.
- Press [▶ / ■] to stop recording.
- Press [REC] to start the playback of the song.

※ **Note** : You can access the list of the recorded songs only when the recording pack is inserted in the main mic.
Press [REC] to see the list. (Refer to chapter 03-02)

6 PLAY / STOP BUTTON



- Press [▶ / ■] once to play the selected song.
- Press [▶ / ■] again to stop playing the song.

7 MODE BUTTON



- You can see the function menu bar on the upper screen by pressing [MODE]. First, find a function you want to use by pressing [▼], [▲], and then press [▶ / ■] to prompt you to the sub-menu.
- Press [▼], [▲] then [▶ / ■] to choose an option.
- [MODE] is used in conjunction with other buttons to access secondary functions.

MODE Function	
	VOLUME (5 Different Sub Volume Control Menus Appear) ① Music volume control 0 ~ 15 / ② Melody volume control 0 ~ 15 ③ Multiplex(RSM) volume control 0 ~ 15 / ④ MIC volume control 0 ~ 15 / ⑤ SUB MIC volume control 0 ~ 15
	TEMPO (Adjusts the Tempo of a Song) The tempo adjustment is between -7 ~ 8, and you can select the tempo level within this range.
	KEY (Adjusts the Level of the Key) The key adjustment is between -7 ~ 8, and you can select the key level within this range.
	SEARCH (Song Search Function) Look for your favorite song. (Refer to chapter 03-03 under “Song Search”)
	EFFECT (Musical Effects) : 4 Different Sub Menus Appear ① Echo volume control 0~15 ② Instrument : You can change the melody's instrumentation by using [▼], [▲] from among 8 instruments while singing a song. ③ Voice change : MIC voice alteration function that can change your voice either to female voice or to male voice. ④ Vocal Assist ON (the vocal assist stops whenever you sing) / OFF (the vocal assist remains even when you sing).
	PLAYING (Technical Effects) : 4 Different Sub Menus Appear ① Continuous Playback : If you wish to continue playing chosen songs in sequential order, select a starting song and press MODE→6→1. (for example, if you select song number 241, play the song, and then press MODE → 6 → 1) ② Random Play : MAGICSING randomly chooses a song for you. ③ Pause : A song pauses. Press [▶ / ■] to continue playing. ④ Selected Section Repeat : Repeats a certain section in a song. ※ Press [MODE + 6 + 4] to set the starting point and [MODE + 6 + 4] again to set the ending point. Pressing [MODE + 6 + 4] for the 3rd time turns off this function. ※ This “selected repeat function” is not available for the prelude and interlude sections of a song.
	GAME : 2 Different Sub Menus Appear ① Singing Contest / ② Song Quiz
	REC & PLAY ① Record / ② Playback (Plays the recorded song)
	SPECIAL EFFECT : 5 Different Sub Menus Appear ① Musical Notation (Key Note Guide) / ② My-Mic / ③ Theme : Background Themes (9 background themes to choose from), Scoreboard (Records your scores at the end of each song) / ④ Silent : Silent mode (you can choose from “level 1”, “level 2”, and “off”) / ⑤ Lyric ON (displays the lyrics of the song) / OFF (does not display the lyrics of the song)
	CONFIG. (Configuration) (Please refer to chapter 03-09 for a more detailed information)

RECORDING & RECORDING PACK

1 RECORDING

- Use this function to record your song and to play back your recorded singing performance.
- Select a song first.
- Press [MODE + REC] to start recording.
- Press [▶/■] to stop recording.
- To start the playback of the previously recorded song, press [REC].
- Press [▶/■] to stop the playback.
- A song recorded less than two seconds will not be recorded.

※ You can record a song of up to five minutes long.
[Approximately for one song].

※ Multiplex songs cannot be recorded.

2 RECORDING PACK

A recording pack records the user's voice with the music. The recording pack may look exactly the same as an additional song pack, but both store different data types.

Unlike other song packs, data in the recording pack are changeable.

- Turn off the ET9K, and insert the recording pack in one of the four slots located in the back of the main mic. (The recording pack can be inserted along with other song packs.)
- Turn on the ET9K and select the song you would like to record.
- Select a song first.
- Press [MODE + REC] to start recording.
- Press [▶/■] to stop recording.
- Press [REC] to access the list of the recorded songs.
- Press [▼], [▲] to scroll through the list to select one of the recorded songs.
- Press [▶/■] to play the recorded song.
- Press [▶/■] again to stop the playback.
- If you want to delete a recorded song, select the recorded song from the list and press [RES].

※ While using the Recording Pack, your singing performance will not be recorded in the internal memory of MAGICISING.

※ You cannot record your singing performance in the middle of a song. If you press [MODE + REC] in the middle of your singing, the song stops, restarts, and then the recording takes place.

※ Settings such as tempo or key should be set in advance as these cannot be changed while the song is being recorded. Also, during the recording, certain functions such as continuous play or pause are not available.

※ Songs you have recorded in a recording pack can be played or deleted only when the song packs are inserted.

※ Recording time: about 120 minutes. (NAND 1Gb)

3 How to Set up a Recording Pack & An Additional Song Pack

CAUTION: TURN THE POWER OFF FIRST.

It is very important to power off first before removing or inserting a recording pack or an additional song pack.

1. Locate the back cover of MAGICISING. Open the back cover.
2. The arrow on the top of a recording pack or other packs should be pointing towards the MAGICISING head. Insert any pack into one of the 4 slots in the back of the main mic and carefully press it. A click sound indicates that it is properly inserted.
3. Close the back cover. Turn the power on.

SONG SEARCH

1 HOW TO ENTER THE SONG SEARCH MODE

- Press [MODE + 4] to enter the song search screen.

2 BUTTONS FOR THE SONG SEARCH MODE

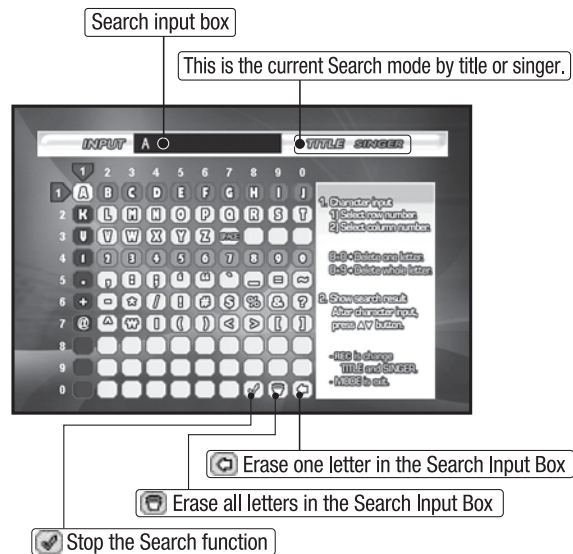
- Press [0] ~ [9] to input letters or select the song search function.
- Press [▼] or [▲] to scroll through the list of songs on the screen.
- Press [REC] to select a searching method either by Title or Singer.

- ① Searching by Title : You can search for a song by typing letters, numbers or special characters of the song title.
(The title icon will be highlighted on the screen)
- ② Searching by Singer : You can search for a song by typing letters, numbers or special characters of the singer's name.
(The singer icon will be highlighted on the screen)

- Press [MODE] to end this song search function.

3 HOW TO SEARCH A SONG

You can select a song by inputting letters, numbers or special characters using this song search table. Please follow the instructions below.



- ① Press [0] ~ [9] to select any letters in the row section of the table.
- ② Press [0] ~ [9] to select any letters in the column section of the table.
- ③ A selected letter will be indicated on the screen. You can repeat ① and ② to input the next letters or characters.
- ④ Press [▼] or [▲] to see songs with the corresponding letters you typed in the on-screen list.
- ⑤ Press [REC] to go back to the song search table.

※ The search function disregards spaces when you type.
(e.g.: If you want to search a song with the title "A DONDE BOY", you only have to enter "AD"(without space between characters) to execute the search.)

4 HOW TO EXIT THE SONG SEARCH MODE

- Press [MODE] to end the song search mode.
- Press [0] + [8] to end the song search mode.
- press [▶/■] to play the song you selected using [▼] and [▲].

※ Other functions

- ① Pressing [0]+[8] will end the song search function.
- ② Pressing [0]+[9] will erase all the letters you typed in the song search mode.
- ③ Pressing [0]+[0] will erase letters or characters one by one as a backspace function.

MY-MIC

- 1** - This function enables you to save your own customized settings over the song you chose such as the volume of music, melody, microphone, echo effect, and multiplex as well as the tempo and key setting.
You can recall these settings when you select and sing the song again.
- 2 SAVING ADJUSTED SETTINGS**
 - While singing a song, adjust settings such as the volume of music, melody and the way you want to customize the song, and then press [MODE + 9 + 2], while the song is still playing.
The song with adjusted settings will be saved in the [MY-MIC] song list. (If the same song is already in the list, the song will be updated with new settings.)
 - The lists containing the customized settings will be retained even after turning off the ET9K.
- 3 SELECTING & PLAYING A SONG**
 - Press [MODE + 9 + 2] to see the [MY-MIC] song list while not playing any song.
 - Select the song from the list and press [▶/■] to play the song with the stored settings.
- 4 DELETING A SONG**
 - Press [MODE + 9 + 2] while selecting a song to see the stored list of MY-MIC Songs.
 - Press [▼], [▲] to select the song you want to delete, and press [RES] to delete it .

THEME (BACKGROUND THEME AND SCOREBOARD)

- 1 THIS FUNCTION CAN ONLY BE SET BEFORE CHOOSING A SONG**
 - Press [MODE + 9 + 3] for this function.
- 2 TO FINISH THIS FUNCTION, PRESS [RES].**
- 3 BACKGROUND THEME**
 - You can select any theme from a set of nine different themes as screen background.
 - Press number buttons [0] ~ [9] or [▼], [▲] to set the theme you want.

[0] : Does not set any background theme.

[1] Love	[2] Party	[3] Summer
[4] Nature	[5] Carnival	[6] Sports
[7] City	[8] Country	[9] Tour

Once a background theme is set, only the pictures related to the selected theme will be shown on the screen.
- 4 SCOREBOARD**
 - The scoreboard shows the corresponding song numbers and the scores of the songs that you have played.
(Only 7 songs will be displayed on the screen.)

MULTIPLEX (RSM)

1 MULTIPLEX SONGS CONSIST OF THREE PARTS

- **LIVE** : Only music is played.
- **VOCAL** : The recorded voice of a singer (vocal assist) is played together with the music.
- **CHORUS** : Specific instruments are played in a reprise part of a song.

2 VOCAL ASSIST

- This feature is available only to selected songs with Multiplex. (To see the list containing the selected Multiplex songs, press [MODE + 5 + 4]).
- The recorded voice of a singer [VOCAL ASSIST] is played together with the music.
- If you wish to activate this function, press [MODE + 5 + 4] to turn it ON while singing a multiplex song.
The voice of the vocal assist disappears when you sing the song. And if you stop singing, the vocal assist comes back.
- If you wish to deactivate this function, press [MODE + 5 + 4] to turn it OFF, which enables you to sing along with the vocal assist.
- If you do not wish to hear the voice of the vocal assist at all, press [MODE + 1 + 3], the Multiplex(RSM) bar will appear on the upper part of the TV screen. Then press [▼] until it reaches [0].
- If you wish to hear the vocal assist again, press [MODE + 1 + 3] then press [▲] until it reaches a desired level.

3 VOLUME ADJUSTMENT

- Press [MODE + 1 + 3] to enter the volume control section for the multiplex songs.
- Adjust the volume of the vocal assist by pressing [▼], [▲] to decrease / increase the volume.

MUSICAL NOTATION (KEY NOTE GUIDE)

- 1 Press [MODE + 9 + 1] to see the song list containing only the songs with this note guide function.
(This function is available only for the songs in the list.)

- 2 While singing a song, if you select other functions such as song search or volume control (echo, melody, etc), a musical score will disappear and it will appear again on the next lyric screen. Choose a song from the list and play the song. After that, press [MODE + 9 + 1] to choose one of the two settings which are "Normal", and "OFF".

A. Normal : Displays the musical notes on the upper part of the screen with the original key of the song.

B. OFF: Does not display any musical notes.

※ A musical notation appears on the upper part of the screen as soon as a song starts.

※ This gives the user an idea of the key/pitch of the song he/she is about to sing.

GAME

1 SINGING CONTEST

- This contest will be held between team A and team B. Each team respectively selects three songs at random and sings them by turns. A team getting a higher score will be the winner. This game will be started by pushing any button on the mic except the power button. Have fun!!
- Press [MODE + 7 + 1] on the mic and press any buttons except [POWER] to see the scoreboard between team A and team B competing by singing three randomly chosen songs for each team. Then, press [▶/■] to play the singing contest game which will play randomly chosen songs or press [RES] to exit.
- A team with a higher score wins.

2 SONG QUIZ

- Please listen carefully to the music and select a correct song title. If your answer is incorrect, one heart [one point] will be reduced. There is also a bonus question in every five questions from which you get one heart [one point] if your answer to that bonus question is correct. Please select one of the levels below by pressing the corresponding no. button on the mic to start the game.
- Press [MODE + 7 + 2] and press no. [1], no.[2] or no.[3] button on the mic for the different levels of difficulty.
 - 1) **The no.[1] button (Difficult)** : Has 3 hearts (3 points) in the “life” section on the screen with 15 seconds to answer. (You will lose one heart (1 point) per incorrect answer.)
 - 2) **The no.[2] button (Normal)** : Has 4 hearts in the “life” section on the screen with 30 seconds to answer. (You will lose one heart per incorrect answer.)
 - 3) **The no.[3] button (Easy)** : Has 5 hearts in the “life” section on the screen with 60 seconds to answer. (You will lose one heart per incorrect answer.)
- Pressing any button except [1],[3], and [POWER] will guide you to the “Normal(no.2)” level with 4 multiple choices with the corresponding numbers (1 ~ 4).
- Key in the number that corresponds to your answer within the given time limit.
- To finish or exit this game, press [RES].

CONFIGURATION MENU

- 1 Press [MODE]+[0] to enter the configuration menu.

- 2 Press [MODE] to exit the configuration.

3 HOW TO SELECT CONFIGURATION OPTIONS

- [1] Select a function using [▼], [▲] or press the corresponding number on the left side of the function. To select a sub-option, press the corresponding number on the left side again or press [▶/■].
- [2] Select a function by pressing [▼], [▲]. And then press [0] to change its option, and press [▼], [▲] to select sub-options. (Press [▶/■] to exit a sub-option.)

4 CONFIGURATION OPTIONS

- [1] **SUB MIC** : Sets the wireless duet mic ON/OFF.
- [2] **LYRIC BAR** : ON (A blue bar behind lyrics appears) / OFF (The blue bar disappears)
- [3] **MIC V.C.** : Changes your voice either to a female's or male's. (The “OFF” mode means to go back to your own voice.)

5 ADVANCED CONFIGURATION

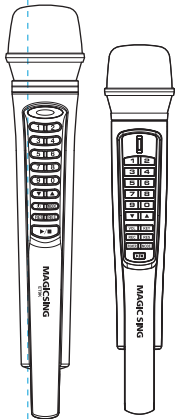
Press [4] in the Config. menu to enter the Advanced Config.

- 1) **Score Check** : Turns on or off the scoring function.
- 2) **Real Time Score** : Shows your score throughout the whole song you are currently singing if you turn this function on.
- 3) **Song Countdown** : Sets the countdown (4, 3, 2, 1) display ON / OFF.
- 4) **Lyric Line** : Selects the number of lyric lines shown on the TV screen (2 lines, 3 lines, Auto).
- 5) **Lyric Position** : Sets the position of lyrics on the screen. (Center, Left-Right, All Mixed)
- 6) **Language** : Selects the language for the system.

Functions & Settings - Chapter.03

7) RES. Function

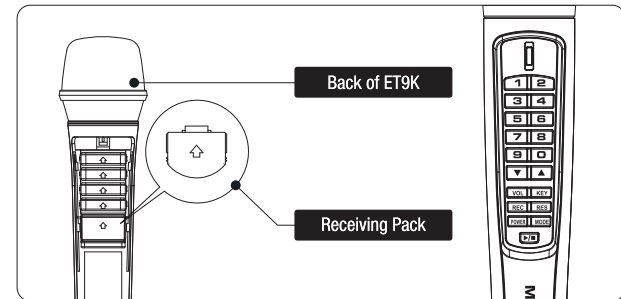
- Stores and retrieves the list of reserved songs on the ET9K.
- After reserving all the songs of your choice, simply access this function and select "SAVE" to store the list of the songs.
- The next time the ET9K is turned on, simply access this function and then select "LOAD" to retrieve the list of the songs.
- Press [▼], [▲] to highlight a song you want to delete from the list, and then press [RES].



Chapter.04 - Optional Items

WIRELESS DUET KARAOKE

Enjoy singing with a friend with a wireless duet microphone. You can use the various functions that are also available in MAGIC SING. (ET9K)

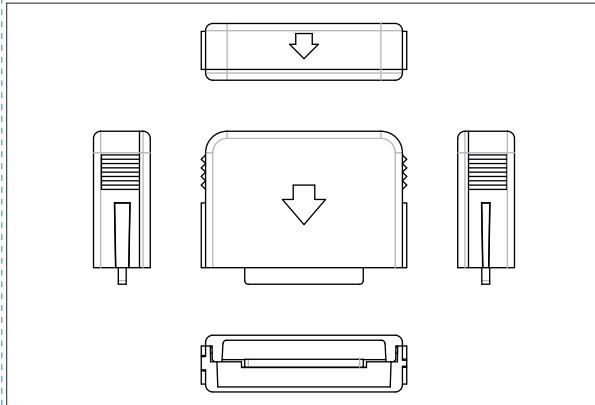


- 1 Open the back cover of the main mic, then plug the receiving pack in as shown above.
- 2 Press **MODE** + **0** + **1** on the main mic, "SUB MIC ON" will be displayed on the screen. If you do not want to use SUB MIC, set it "SUB MIC OFF" by pressing the no. 1 key button.
- 3 Open the back cover of the sub mic, insert two AA batteries, and press the power button. The yellow LED light indicates that it is on. (continuously blinking)
- 4 **[▼] [▲] Button**
Scroll up and down through the on-screen list of songs.
Increases / decreases the level of key, tempo, melody, volume, etc.
- 5 **VOL Button**
Allows you to increase or decrease the SUB MIC volume.
- 6 **KEY / REC / RES Button**
 - Adjusts key levels.
 - Records a song. (To record a song, please refer to "03-02" since the recording function is exactly the same as the main mic)
 - Reserves a song.
- 7 **MODE Button**
This **[MODE]** button is used in conjunction with other buttons to access secondary functions.
(Please refer to "03-01" for more detailed informations.)

- ! If LED light changes from yellow to red, the batteries need to be replaced.
- ! It is only compatible with ET series.

RECORDING PACK

You can record your own singing into the Recording Pack.



Turn off MAGICSING : MAGICSING should be turned off first.

- Insert the Recording Pack into one of the slots in the back of the main mic according to the direction of the arrow.
- Turn on the power of MAGICSING then select a song number, and then press **[MODE + REC]**.
- To stop the recording, press **[▶/■]**.
- To see the list of the recorded songs, press **[REC]**.
And select a song using **[▼]**, **[▲]**, then press **[▶/■]** to start the playback of a song.
- To stop the playback, press **[▶/■]** again.
- To delete the recorded songs, press **[RES]** on the highlighted songs.

You cannot record your singing performance in the internal memory of MAGICSING while you are recording it in the recording pack.

You cannot record your singing performance in the middle of a song. If you press **[MODE + REC]** in the middle of the song, the song stops, restarts, and then recording takes place.

The Tempo, Search, Configuration, and Key functions will not work when you are playing back the recorded songs.

ADDITIONAL SONG PACK

You can add more of your favorite songs to MAGICSING.

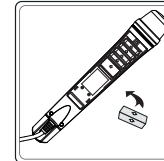
How to Insert an Additional Song Pack

First, turn OFF the power. It is very important to turn off MAGICSING before removing or inserting any additional song pack.

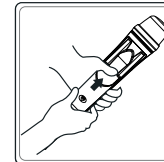
MAIN MIC



- Turn off the power of MAGICSING.
- Press down the back cover of MAGICSING as directed by the arrow and then remove the back cover.

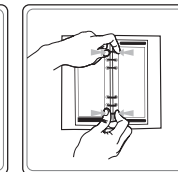
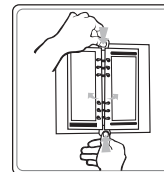


- Make sure that the arrow direction of the song pack is pointing upward when you insert the song pack.
(4 additional song packs can be inserted.)



- After the song pack is inserted, close the back cover.
- Turn on the power of MAGICSING.

SONG LIST INSERTION



- Press down both the top and the bottom metal tabs of the binder simultaneously to open the binder rings.
- Insert the new song list between the binder rings.
- Close the binder rings.

Additional Information - Chapter.05

PRECAUTIONS



Use the adaptor that comes with MAGICISING only. There are many adaptors that are plug-compatible with the jack of MAGICISING, but have different electrical specs. These adaptors would work only for a short period of time, but would very soon damage MAGICISING.

USE THE RECOMMENDED ACCESSORIES ONLY (DC 8V~9V / 550~650mA)



Do not drop MAGICISING. Any external or internal damage due to dropping is not covered under warranty.



Do not insert or remove song packs while MAGICISING is turned on.



Do not store MAGICISING under direct sunlight, in a high temperature, or highly humid area.



Do not use strong chemicals to clean MAGICISING, as these chemicals may damage the unit. Keep MAGICISING away from pets and small children.



Do not press the LED part.



Never use a sharp object on the keypad.



In case MAGICISING was stored in a high-temperature setting, allow sufficient time for it to cool down before using it.



Do not immerse MAGICISING in water or splash water on it. Water damage is not covered by the warranty.



Do not disassemble the parts of the MAGICISING. This will void the warranty.



Do not plug MAGICISING in if it is wet. Immediately contact the service center. If any solid object or liquid gets inside MAGICISING, unplug it and have it checked by our service center.

Chapter.05 - Additional Information

TROUBLESHOOTING

In case you encounter problems in using MagicSing, please check the following recommendations before contacting our service center.

If MAGICISING doesn't power up

ET9K MAIN KARAOKE

Make sure the adaptor is correctly plugged into the power outlet. Check that the male plug is properly inserted into the female jack.

WIRELESS DUET KARAOKE

Check if the battery type is AA. If the battery is low, MAGICISING may not work properly.

If the user's voice cannot be heard

Press the VOL button and check the volume of the Karaoke.

If the TV does not show pictures or emit sound

Make sure all the AV connectors are properly connected according to the correct colors. Check if the TV is in the video mode.

If the TV screen stays frozen

Press the power button for 7 seconds or longer to turn off the MAGICISING.

If the video does not show properly (converting PAL or NTSC mode)

To convert to PAL mode, turn off the mic first. Press and hold button "8" on the mic, and then press the [POWER] button using another finger until the word "PAL" appears on the TV screen. (Do not release button [8] and the [POWER] button until the word "PAL" appears on the TV screen.) To convert to NTSC mode, turn off the mic first. Press and hold button [9] on the mic, and then press the [POWER] button using another finger until the word "NTSC" appears on the TV screen. (Do not release button [9] and the [POWER] button until the word "NTSC" appears on the TV screen.)

If there is any doubt about the product's performance

Turn off the mic first, and then press and hold the [0] button on the mic, and press the [POWER] button using another finger until the words "USER RESET" appear on the TV screen. (Do not release the "0" button and the power button until the words "USER RESET" appear on the TV screen..)

If the wireless duet mic needs to be repaired, the main mic should be included and returned to the nearest service center.

To contact our nearest service center in your area, please visit our website at "www.enter-tech.com".



VER.100

WWW.ENTER-TECH.COM

ENTER-TECH CO.,LTD.

Samhwa B/D, 401-5, Hwagok-7dong, Kangseo-gu, Seoul, Korea

TEL : +82-2-2605-0884 | FAX : +82-2-2691-5354 | E-MAIL : enter@enter-tech.com

Designed by ENTER-TECH KOREA | Printed in China

VER.100