

Acesonic®

THE LEADER IN PROFESSIONAL SING-ALONG EQUIPMENT

TECHNOLOGY to ENTERTAIN



World's First Ever Professional Blu-ray with Karaoke & USB Media Player



PRODUCT CATALOG 2012

WWW.ACESONIC.COM



ABOUT US

Based in Southern California USA, Acesonic is the leading manufacturer of sing-along products, providing a diverse selection of high-quality karaoke equipment to enthusiasts all across the world. Since the company's inception in 2001, Acesonic has been supplying the most modern and innovative products while remaining competitive in our pricing. As a result, consumers have begun to equate our brand name with excellence as well as affordability.

This year, Acesonic continues to offer a wide selection of karaoke players, mixers, amplifiers, speakers, microphones and other related accessories. Our 2012 product line is proud to introduce several new products which feature the latest in karaoke and audio technology.

Over the years, Acesonic has developed one of the best reputations in the business. Our commitment to upholding excellence and leadership in the karaoke industry is shared by every aspect of the company, from production to sales, as we strive to continuously expand and improve to meet the demands of an ever-growing karaoke market from now and beyond.

JOIN THE "ACE" TEAM!

Acesonic is always looking for new dealers and distributors. Karaoke is a fast-growing industry and the demand for quality, affordable karaoke hardware and software is as high as ever! Let us help you capitalize on this demand and convert opportunity into growth for your business.

As a dealer, you will enjoy:

- High profit margins
- Lifetime, year-round customer, technical and repair support
- 1 year manufacturer warranty for your customers
- Unlimited stock rotations
- Discounted display units and free advertising materials
- No-hassle return service
- Convenient payment terms
- Product and sales training
- Drop-shipping for your customers

If your business meets the requirements listed below, don't wait...apply today! The application process is quick and easy, and can be completed within one day.

Dealer requirements:

- Government recognized resale certificate or seller's permit (or equivalent for your area)
- Proof of physical or online store
- A completed and signed reseller's declaration form (we will provide the form)
- A completed payment authorization form (we will provide the form)
- Orders placed in carton quantities
- Minimum first order of \$1,000



PS-420
400-Watt Professional
10" Powered Stereo
Speaker System
see page 11



DGX-212
Professional Multi-Format
Digital Player & Recorder
see page 7



KOD-1000
Karaoke Music Jukebox System
with 500GB Hard Drive
see page 5



**INNOVATION, COMPATIBILITY,
FLEXIBILITY, VALUE & DESIGN
FOR MAXIMUM PERFORMANCE
& ENTERTAINMENT IN MIND!**

Acesonic USA
161 S. 8th Ave.
City of Industry, CA 91746 U.S.A.

phone: +1.888.976.7464
fax: +1.626.820.0625
email: sales@acesonic.com

Acesonic China
Bldg. B #6, Hua Xing Industrial Park, Dongguan Village,
Xin Hua St., Hua Du District, Guangzhou, Guangdong, China

中國廣州市花都区新華街
東莞村華興工業區6號B棟



MAP POLICY

In order to maintain brand integrity and quality, Acesonic has established a Minimum Advertised Price (MAP) policy that authorized dealers must adhere to when advertising and marketing Acesonic products. All authorized Acesonic resellers must agree to the following MAP policy:

All advertised prices, including but not limited to print, broadcast, internet, billboard and other media formats, must be at or above Acesonic's MAP pricing. Our MAP pricing can be obtained through our designated Acesonic sales representative. Resellers are not required to list prices in advertising, however, if it is listed it must be at or above our MAP prices. While resellers are responsible for ensuring their advertised prices are at or above MAP pricing, resellers are also free to set the actual resale price of Acesonic products however they wish.

Failure to comply with our MAP policy may result in loss of authorized reseller/dealer status, either temporarily or permanently. The decision to revoke, suspend or terminate relationship with reseller for MAP policy violations will be at the sole discretion of Acesonic, and may occur without warning.

DROP SHIP POLICY

Acesonic is proud to offer drop shipping for our resellers to anywhere in the US and Canada, with no minimum order and a small drop ship fee. In-stock items will ship within one (1) business day.

UHF-4000R
Professional
Rechargeable
4-Channel Module
Wireless Microphone
System
see page 20



MS-430
Dual-Purpose Boom
Microphone Stand
see page 27

CHECK-OUT
WHAT'S INSIDE!

HARD DRIVE PLAYERS



p.1

MULTI-FORMAT PLAYERS



p.6



SPEAKER SYSTEMS

p.10

MIXING AMPLIFIERS



p.12

MIXERS



p.18



WIRELESS MICROPHONES

p.20



WIRED MICROPHONES

p.24



PORTABLE SOUND SYSTEMS

p.25



ACCESSORIES

p.27



CLUB SYSTEM PACKAGES

Back Page

phone: +86.20.36859042
fax: +86.20.36853499
mobile: +852.8173.6111

1 Year Warranty on all our products

KOD-4000

Karaoke Music Jukebox System
with 4 Hard Drives
& Touch Screen Support



Features

- Full function Karaoke and Music Jukebox
- 4 Hard Drive Slots - Expand up to a total of 12TB
- Digitally record your performances into the hard drive or USB.
- Unlimited song library expansion with high capacity hard drive
- Support MPEG1(dat, mpeg)/MPEG2 (vob, mpeg)/ MPEG4 (AVI, Divx, Xvid)/MP3/JPEG formats
- HDMI video output at 1920 x 1080 resolution
- Supports handwriting recognition (with optional touch screen)
- Supports English, Chinese, Japanese, Korean, Vietnamese Interface
- Advanced song search function:
 - Supports ordering songs by song number, name, artist or by category
- USB Ports for uploading or transferring media files.
- Ethernet Port connects you to the network for automatic updates.
- Easy to use full function remote control
- Onscreen song selection by using the remote control or touch screen
- ± 7 -Step digital key controller

Specifications

- Audio Outputs: L/R, Coaxial, Optical, 5.1 Surround Sound
- Video Outputs: HDMI, DVI, VGA
- Built-in Hard Drive fan
- Windows PC based system
- Dimensions: 17"L x 16"W x 5.5"H
- Weight: 15 lbs
- 1 Year Manufacturer Warranty



Control your KOD* and choose songs through this Acesonic 19" touch screen monitor to play them on your second display and have the ultimate dual screen setup!

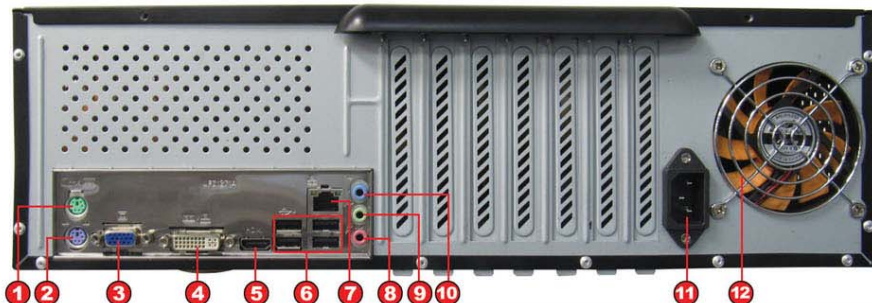
*not all KODs features touch screen support. Please refer to the manufacturers specifications or owners manual for details.

INCLUDES

- Remote Control
- RCA Cable
- 2 AAA Batteries

KOD-4000 Rear Panel:

1. Mouse Input
2. Keyboard Input
3. VGA Output
4. S-Video Output
5. HDMI Output
6. USB Ports
7. Ethernet Port
8. Microphone Input
9. Speaker Input
10. Record Input
11. Power Input
12. Cooling Fan



KOD-2400

HD Karaoke Jukebox System
with Dual Hard Drive Capacity
& Touch Screen Support



Features

- Full function Karaoke and Audio/Video Jukebox
- HDMI video output at 1920 x 1080 resolution
- Easy to operate with instant access to song library by mouse, remote controller, or with a touch screen monitor
- Support MPEG1(dat, mpeg)/MPEG2 (vob, mpeg)/MPEG4 (AVI, Divx, Xvid)/MP3/JPEG formats
- Supports handwriting recognition (with optional touch screen)
- Single or dual screen for selecting songs
- Support two hard drives of up to 4TB max total
- Built-in microphone mixer with 2 microphone inputs
- Music and vocal outputs via HDMI and RCA
- Update/ Add songs (Via USB Port to your PC)
- Select songs by artist, song title, language, & song number
- Random, auto & repeat play

Specifications

- VGA Output for Touch Screen Monitor
- One Set RCA Output for Audio
- Two Sets of RCA Output for Videos
- One Year Manufacturers Warranty

INCLUDES

- Remote Control
- RCA Cable
- 2 AAA Batteries

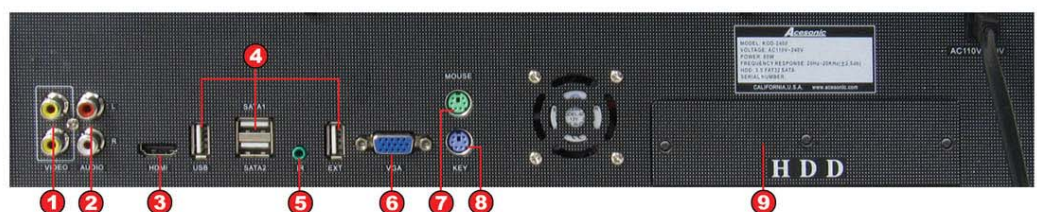


Control your KOD* and choose songs through this AcesoKOD* 19" touch screen monitor to play them on your second display and have the ultimate dual screen setup!

*not all KODs features touch screen support. Please refer to the manufacturers specifications or owners manual for details.

KOD-2400 Rear Panel:

1. RCA Video Output
2. RCA Audio Output
3. HDMI Output
4. USB Ports
5. IR Input
6. VGA Output
7. Mouse Input
8. Keyboard Input
9. Hard Drive Housing



AcesoKOD

2

The Leader In Professional Sing-Along Equipment

KOD-1900

Karaoke Jukebox System with Built-in Touch Screen Monitor



Features

- Full function karaoke, music and video jukebox
- Easily transfer these supported formats into the hard drive via USB using Windows PC software: MP3G, MPEG1(dat, mpeg), MPEG2 (vob, mpeg), MPEG4 (AVI, Divx, Xvid), MP3 and Audio CDs
- Built-in 2TB SATA Hard Drive
- Use single or dual-screen for song selection
- Supports 2nd External Touch Screen
- Song search in many ways including by artist, by song title, by language, by song number and by most popular
- Direct playback from hard drive using pre-assigned song number
- One USB port for file transfer and song management through PC
- One USB Port for song loading
- Instant access to song library by remote control, touch screen or PS/2 mouse
- Onscreen song selection using touch screen or songbook (optional)
- Full function remote control



Shown with optional
1. floor stand or
2. table stand

INCLUDES

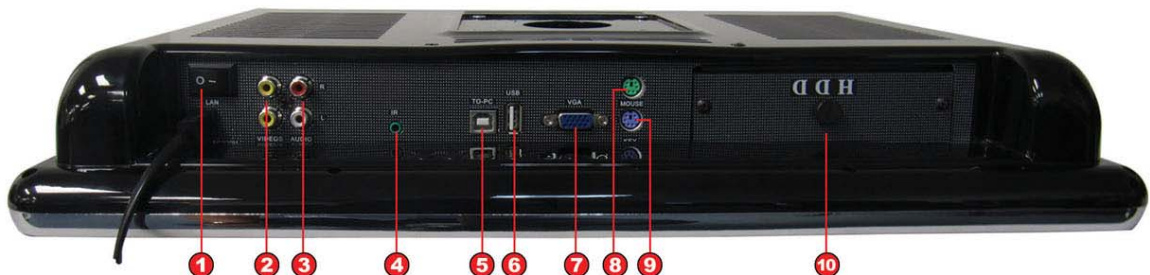
- Remote Control
- RCA Cable
- 2 AAA Batteries

Specifications

- 1 Audio/Video RCA Output
- 1 VGA output (for 2nd touch screen)
- 1 Mouse Input for onscreen operation
- 1 Keyboard Input
- Upgradeable Firmware with future software to enhance the player's functions
- 6-Step Key Control
- Song data encryption function to make sure the music are protected from illegal copying
- Power AC 100 - 220V 50/60Hz
- NTSC/ PAL/ AUTO
- Power Consumption: Less than 54W

KOD-1900 Bottom Panel:

1. Power Switch
2. RCA Video Output
3. RCA Audio Output
4. Headphone Jack
5. USB Port (to PC)
6. USB Port (for song loading)
7. VGA Output
(for 2nd touch screen)
8. Mouse Input
9. Keyboard Input
10. Hard Drive Housing





KOD-1100

Karaoke & Video Jukebox with Touch Screen Support



Features

- Full function Karaoke and Music Jukebox
- Transfer DVDs, VCDs, CD+Gs, MP3Gs, DivX, AVI and audio CDs into the hard drive
- Built-in removeable 2TB Hard Drive
- Single or Dual Screen for selecting songs
- Update/Add songs (Via SD card or connect your KOD-1100 to your PC via the USB cable)
- Supports MP3G, MPEG1(dat, mpeg)/MPEG2 (vob, mpeg)/MPEG4 (Avi, Divx, Xvid)/MP3/JPEG
- Supports mouse, remote, and touch screen to select songs
- Select songs in different ways (artist, song title, language, song number etc.)
- Direct playback from hard drive using pre-assigned song number
- USB port for easy upgrade or file transfer through PC
- Directly access function keys on the front panel
- Instant access to song library by remote control
- Random play, auto play, repeat play
- Onscreen song selection using touch-screen or through the provided songbook
- Update songs through SD Card

Specifications

- Power AC 100 - 220V 50/60Hz
- Power Consumption: Less than 54W
- Audio: 2 RCA audio
- Video: 2 RCA, 1 VGA
- NTSC/ PAL/ AUTO
- Dimensions: 17" L x 15.35" W x 4.75" H
- Weight 7.9 lbs
- 1 Year Manufacturer Warranty



Control your KOD* and choose songs through this Acesonic 19" touch screen monitor to play them on your second display and have the ultimate dual screen setup!

*not all KODs features touch screen support. Please refer to the manufacturers specifications or owners manual for details.

INCLUDES

- Remote Control
- RCA Cable
- 2 AAA Batteries

KOD-1100 Rear Panel:

1. Mouse Input
2. Keyboard Input
3. Touchscreen Input
4. 2 TV Outputs
5. Coin Acceptor Interface
6. USB Port
7. VGA Output 1
8. VGA Output 2 (to touchscreen TV)



Acesonic®

KOD-1000

Karaoke Music Jukebox System with 500GB Hard Drive



Features

- Full function Karaoke and Music Jukebox
- Load all your MP3G songs using the included song editor software
- Multi-format karaoke player compatible with a wide array of disc formats
- Pull-out hard drive for easy upgrade or file transfer through PC
- Unlimited song library expansion with high capacity hard drive
- Onscreen Song Selection
- Large full function remote with A-Z keypad & PS/2 keyboard (not included) controls all disc and karaoke function for easy song selection
- Direct playback from the hard drive using pre-assigned song numbers
- Advanced song search function:
 - Supports ordering songs by song number, name, artist or by category
 - Store your own favorite songs
- USB Port - JPG, MP3, MPEG1, MPEG2
- 2 Microphone inputs with independent volume controller
- Total solution for karaoke businesses with coin acceptor interface
- Small and compact design, no larger than a regular multi-format player
- Supports PS/2 keyboard for easy UI operation & data input
- Progressive scan video output
- Large song reservation memory
- Random play, auto play, repeat play
- ± 7 Steps digital key control
- Supports up to a 2,000GB hard drive
- Supports multiple languages with upgradeable fonts

Specifications

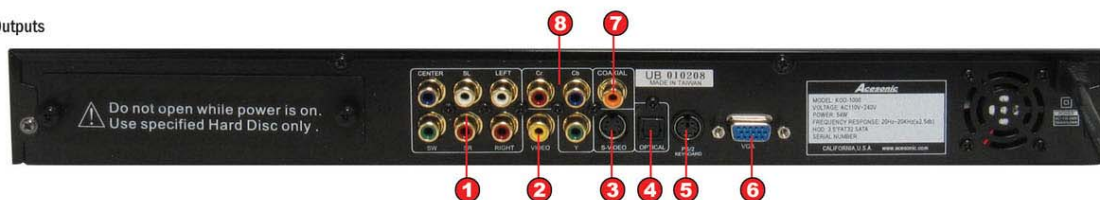
- Compatible Disc Formats: DVD, SVCD, CD+G, VCD, Audio-CD, MP3, MPEG, CD-R, CD-RW, DVD-R, DVD-RW
- Power Supply: AC 100V - 220V (50/60Hz)
- Power Consumption: Less than 54W
- Dual 1/4" Microphone Inputs
- Frequency Response: 20Hz - 20KHz
- Signal-to-Noise Ratio: >85dB
- **Hard Drive Size: 3.5" SATA- 500GB IDE 7200RPM Preformatted (Upgradeable to 2TB Hard Drive)**
- **Maximize Hard Drive Size: 2,000GB Single Drive Slot**
- Audio Outputs: L/R, Coaxial, Optical, 5.1 Surround Sound
- Video Outputs: Component Video, Composite Video, S-Video, VGA
- Built-in Serial Port to support Coin / Dollar Bill Acceptor
- Built-in Hard Drive fan
- Dimensions: 17"L x 10"W x 2"H
- Weight: 5.1lbs
- 1 Year Manufacturer Warranty

INCLUDES

- Remote Control
- RCA Cable
- 2 AAA Batteries

KOD-1000 Rear Panel:

1. 5.1 Surround Sound Audio Outputs
2. RCA Video Output
3. S-Video Output
4. Optical Output
5. PS/2 Keyboard Input
6. VGA Output
7. Coaxial Output
8. Component Outputs



WORLD'S FIRST PROFESSIONAL



with KARAOKE & USB MEDIA PLAYER

BDK-2000 Blu-ray Disc™ Karaoke Player



Now your Blu-ray player can do all these

Features

- Multi-format compatibility: Blu-ray™, BD-ROM, BD-R, BD-RE, BD-R DL, BD-RE DL, DVD, DVD±R, DVD+RW, CD-DA, CD-R, CD-RW, VCD, CD+G, Audio CD and data discs.
- Compatible formats: MP3, MP3G, WAV, WMA, MPEG-1, MPEG-2 (MPG/VOB), MPEG-4 (AVI), DivX, XviD, RMVB, DAT, ISO, M2TS, MKV, MOV and JPEG files
- Play all your media from discs or USB drives in HD quality up to 1080p.
- Two USB 2.0 ports (front & back)
- Supports NTFS and FAT32 hard drives up to 2TB.
- Direct access with front panel keys.
- LAN ready lets you play online BD-Live streaming content.
- Two microphone inputs lets you sing-along or annotate.
- Microphone bass, treble, volume and echo adjustment.
- ± 7 Half-step key controls.
- 3.5mm stereo headphone output jack
- **Rackmountable**

Specifications

- 1 x HDMI 1.3 output
- 1 x CVBS output
- 1 x RCA Audio output
- 1 x YPbPr output
- 1 x Optical output
- 1 x Coaxial output
- 2 x USB 2.0 Port (1 front, 1 rear)
- 1 x Ethernet 10/100 mbps port
- 2 x $\frac{1}{4}$ " Microphone inputs

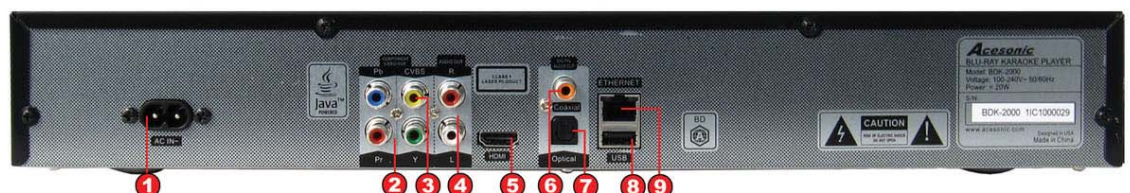
INCLUDES

- Remote Control
- 6FT RCA Cable
- Rackmount Kit



BDK-2000 Rear Panel:

1. 100-240V AC In
2. Component Video Outputs
3. CVBS Output
4. RCA Audio Outputs
5. HDMI 1.3 Output
6. Coaxial Output
7. Optical Output
8. USB 2.0 Port
9. Ethernet 10/100 mbps port



Acesonic®

6

The Leader In Professional Sing-Along Equipment

CONVERT CD+G TO MP3G AT 4X THE SPEED

DGX-212 Professional Multi-Format Digital Player & Recorder



Features

- Convert CD+G to MP3G at 1x or 4x the speed
- HDMI video output up to 1080p
- Vocal Output to HDMI & RCA
- Display video from HDMI and RCA outputs at the same time
- Instantaneously record your performance or vocals to an SD Card with or without music, with a push of a button!
- Recognizes up to 10,000 songs on USB drives or SD cards
- Reads faster with it's USB 2.0 interface
- Generate songlist with song number for all songs in USB/ SD/ Disc
- Plays back last recorded song with the "Songlist Function" in a touch of a button. No waiting.
- New Cue On/ Cue Off function makes it stop after each MP3G/CD+G song
- Smart memory lets you resume any movie from where it stopped when you turned off the machine. Turn it on and resume your movie. No need to start over and forward the movie to the desired point.
- Using the latest processor with increased memory, gives a smoother, faster and "jitter" free recording!
- One button shortcut to display music, pictures or videos only in a folder.
- Built-in Equalizer
- Easily switch between audio Track 1 or Track 2 in AVI or MPG2
- Rackmountable

Specifications

- Compatible with MP3, CD, VCD, CD+G, MP3G, DVD, AVI, MP4, DivX
- Record singing while playing CD, VCD, CD+G, MP3G
- Simultaneous dual-screen display on HDMI and RCA output perfect for KJs
- Convert a single track or whole CD+G discs into MP3G files
- Signal system: PAL/NTSC/AUTO
- Upgradeable Firmware with future software to enhance the player's functions
- Video output: HDMI, VGA, Composite Video, S-Video, Component Video
- Audio output: 2 Channel, 5.1 Channel, Optical and Coaxial
- Headphone output jack
- Power AC 100~240V 50/60Hz
- Standard 2U height
- Dimensions: 17"L x 8.5"W x 2.5"H
- Weight: 3 Lbs
- 1 Year Manufacturer Warranty

INCLUDES

- Rackmount Kit
- Remote Control
- Power Cord
- RCA Cable

DGX-211 Rear Panel:

1. VGA Output
2. 5.1 Surround Sound Audio Outputs
3. Component Video Outputs
4. Coaxial Output
5. HDMI Output
6. S-Video Output
7. Optical Output
8. Composite Video Output



FIRST PLAYER WITH CD+G-TO-MP3G CONVERTER



DGX-210

Multi-Format Karaoke Player
with Digital Recording
& CD+G to MP3G Converter



Features

- Plays most downloaded MP3G format karaoke tracks.
- Create and rename MP3G files from CD+G, USB device or SD card
- Compatible Formats: Audio CD, DVD-Video, VCD, CD+G, MP3G, JPEG, MP3, MPEG4, WMA, DivX (3.* - 6.0), Xvid
- Rip and copy any of your favorite tracks to a memory card and keep it forever without the need of the original disc to play your tracks with the CD+G to MP3G Converting Function
- You can save your favorite songs to a USB device or SD card by ripping from a disc
- You no longer need an expensive PC and a special CD-ROM to convert your discs to MP3G tracks
- You can record your singing with a CD+G or MP3G track and it will rip the graphic when it's recording
- ± 6-Step key control
- Rackmountable - Kit included

Specifications

- Compatible with MP3, CD, VCD, CD+G, MP3G, DVD
- Record singing while playing CD, VCD, CDG, MP3G
- Create & Rename MP3G files from CD+G, USB device or SD card
- Two microphone inputs with individual volume control
- Professional karaoke mixer with echo volume adjustment
- Full function front panel design for easy operation.
- Video Signal: PAL/NTSC/AUTO
- Singing scoring game
- Progressive scan up to 720p HD video output
- Video output: Composite video, S-video, component video
- Audio output: 2 channel, 5.1 channel, optical and coaxial
- FDA approved
- Power AC 100 - 240V 50/60Hz
- Dimensions: 17"L x 9"W x 2"H
- Weight: 4.5 lbs
- 1 Year Manufacturer Warranty

INCLUDES

- Remote Control
- Power Cable
- RCA Cable
- Rackmount Kit

DGX-210 Rear Panel:

1. 5.1 Surround Sound Audio Outputs
2. Coaxial Output
3. RCA Video Output
4. S-Video Outputs
5. Optical Output
6. Component Video Outputs



Acesonic



DGX-109

Multi-Format Karaoke Player
with USB, SD/USB Reader
+ MP3 Recording



Features

- Progressive Scan Output Via Component Video or VGA for Flicker-Free Images
- HD Compatible: 480i/720p
- Compatible Disc Formats: CD, CD+G, VCD, DVD, CD-R, CD-RW, DVD±R/RW, Dual Layer DVD±R/RW
- Compatible Formats: Audio CD, HDCD, DVD-Video, VCD, CD+G, MP3, JPEG, WMA MPEG
- Next generation Real-time Super Error Correction - Auto Skipping Discs Read Errors, Provides Smooth Playback even when discs are dirty, scratched or minor cracked.
- Super Shock Resistant Design
- Upgradeable Firmware - Support Future New Formats When Upgrades Are Available
- Simultaneous Dual Screen Output: VGA & Component Video or RCA & S-Video
- Built-in 5.1-channel Dolby Digital, AC-3 DTS and HDCD decoders
- Player can be set to any region for exporting worldwide
- Plays Both NTSC and PAL Discs. Automatic NTSC and PAL switching
- Aspect Ratios: 4:3 Pan and Scan, 4:3 Letterbox, 16:9 Widescreen
- ± 6 Steps Key Control
- Random Play Mode / Programming Mode / A-B Repeat Mode
- Slow Motion / Picture Zoom / Frame Advance / Multi-Angle Viewing / Bookmark
- Playback Control (PBC) for Direct Plays
- Parental Password Control
- 2 x 1/4" Microphone Inputs
- 2 Independent Microphone Volume Controllers
- Built-in Professional Grade Karaoke Mixer
- Built-in Microphone Bass and Treble Controller
- Echo Controller

Specifications

- 5.1 Channels Surround Sound Output (RCA)
- 2 Channels Stereo (Music) Output (RCA)
- Mixer (Vocal + Music) Output (RCA)
- Coaxial Output
- Optical Output
- 1 RCA Video Output
- 1 S-Video Output
- 1 Component Video Output (Y/PB/BR) (Interlace or Progressive Scan)
- VGA Output (Interlace or Progressive Scan)
- European SCART Output
- Lifetime Technical Support
- Universal Power Supply: AC 100V-245V, 50/60Hz Auto switching
- NTSC / PAL Switchable for U.S. and European Standard
- Designed in U.S.A.
- CE / UL / FDA Certified
- Dimensions: 17"L x 9.5"W x 2.75"H
- Weight: 9 lbs.
- 1 Year Manufacturer Warranty

INCLUDES

- Remote Control
- RCA Cable
- 2 Wired Mics
- 2 AAA Batteries
- Rack-Mount Kit



DGX-109 Rear Panel:

1. Power Input
2. VGA Output
3. Scart Output
4. AV Output
5. 5.1 Surround Sound Outputs
6. Stereo Audio Output
7. Coaxial Output
8. Video Output
9. S-Video Output
10. Optical Output
11. Component Outputs
12. AV Input



A.
SP-582
Diamond
250-Watt, 10-Speaker,
3-Way Crossover
Professional Speakers

B.
SP-580
120-Watt Heavy-Duty
Speaker System

C.
SP-450
300-Watt Professional
Vocal Speaker System

D.
SP-280
120-Watt 8"
Speaker System

E.
SP-265
100-Watt 6.5"
Speaker System

Specifications

Max Power Output	250W + 250W @8Ω	120W each	300W each	120W each	100W each
Frequency Response	45 - 20KHz	50 - 18KHz	55Hz - 20KHz	55Hz - 20KHz	55Hz - 20KHz
RMS	250W @4Ω / 500W Peak @4Ω	80W each	200W each	80W each	60W each
Impedance	8Ω	8Ω	2 - 8Ω	Low/Mid - 8Ω, High - 4Ω	Low/Mid - 8Ω, High - 4Ω
Sensitivity	98dB	90dB	92dB	90dB	90dB
Woofers	2 x 10"	8"	10"	8"	6.5"
Mid-Range	4 x 3"	2"	none	none	none
Tweeter	4 x 3"	1"	2 x 3"	2 x 3"	3"
Weight	30 lbs each	21 lbs each	25 lbs each	17.25 lbs each	8 lbs each
Dimensions (LxWxH)	12" x 14.5" x 17"	10.8" x 17.5" x 10"	20.27" x 11.4" x 11.8"	17.5" x 11" x 10.5"	8.25" x 12" x 6.75"

Features

- 3-Way full frequency output
- Professional sound quality, heavy-duty design
- Vented low frequency radiation
- Can be used as a monitor speaker
- Ceiling-mount and speaker stand mount compatible

Features

- Only speaker with woofer, mid-range and tweeter
- Sustains continuous use and maximum volume
- Ported speaker enclosure
- Ceiling-mount and speaker stand mount compatible

Features

- Type: 2-Way, 3-Speaker Bass-Reflex Type
- Attractive three-dimensional curved design
- Banana Plug connector style interface
- Ceiling-mount and speaker stand mount compatible

Features

- Ported speaker enclosure



Features

- Ported speaker enclosure



Acasonic®

**NEW for
2012**

PS-420

**400-Watt Professional
10" Powered Stereo
Speaker System**

**with Dual XLR
Microphone Inputs**

Features

- 400 Watts Dual 10" Power Speaker
- Music Bass, Treble Volume Control
- Microphone Echo & Volume Controls
- Two XLR Microphone Inputs
- RCA Audio Line Input & Output
- Speaker Stand Mountable



SS-689

**Professional Heavy Duty
Speaker Stands (Pair)**

- 2 Steel Constructed Universal Mounting Bracket Included
- Height: 36"-72"
- Weight: 15 lbs each
- Load Capacity: 88 lbs each

Specifications

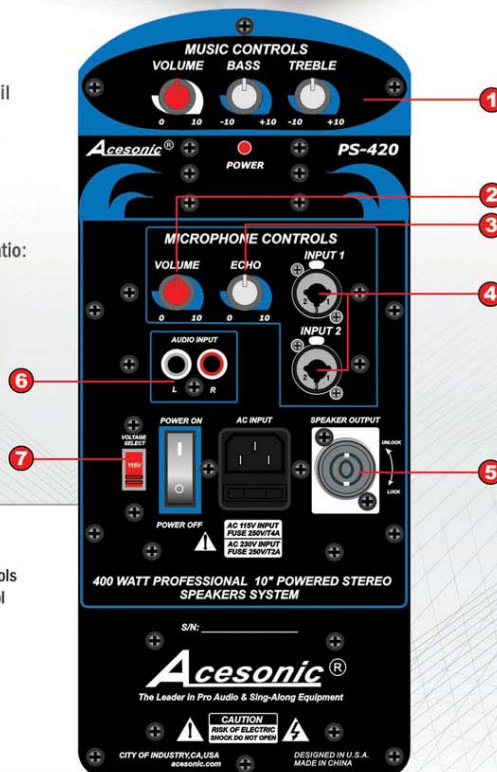
- Max Power Output: 400W (200W + 200W)
- 10" Woofer with High Temperature Voice Coil
- 2" Mid-Range Driver
- Frequency Response: 20Hz - 20KHz (± 3 dB)
- Microphone Input Sensitivity: <25mV
- Echo Delay: >80
- Input Sensibility: <250mV
- Max Input Signal: 3Vp-p - Signal-to-Noise ratio: >80dB
- 115 - 230V Selectable
- Speaker stand holes for easy mounting
- Dimensions: 13"L x 10"W x 20"H
- Weight: 19.25 lbs
- 1 Year Manufacturer Warranty

PS-420 Rear Panel:

1. Volume, Bass, Treble Controls
2. Microphone Volume Control
3. Microphone Echo Control
4. XLR Microphone Inputs
5. Speaker Connector
6. Audio Input
7. Voltage Selector

INCLUDES

- Speakon Cable
- Power Cord



KJV-835

**400-Watt
Professional Vocal
Mixing Amplifier
with 3.5" LCD
Monitor/MP3G Player
& Recorder**



Features

- PC-to-USB Interface for pure digital simultaneous Playback & Recording (Windows XP, Vista & 7)
- 400 Watts Max Power Output
- 3.5" Built-In LCD Screen to monitor and 2nd A/V source
- Headphone Output for 2nd A/V source
- LCD Status Screen to Display: Key, Main Input Source, Monitor Input Source and Multiplex
- Built-in MP3G Recorder and Player Module
- 4 Audio/Video Inputs: DVD/AUX/PC/MP3G Module
- 2 Component Video Inputs: DVD/AUX and 1 Component Video Output
- 1 RCA Audio/Video Output
- 1 PC Input (Composite Video + USB Port)
- Auto Input Selector
- L/R Multiplex Channel Output Selector
- Music Low, Mid, High, Balance, Volume Controls
- Microphone Delay, Repeat, Echo, Low, High Volume Controls
- Microphone Volume Controls for Low, Mid, High, Echo, Balance, Volume
- 3 Front & 2 Rear 1/4" Microphone Inputs
- Master Microphone, Echo & Volume Controls
- 4 Audio Outputs (Record Out, Line Out, Subwoofer Out (Music/ Mixing), Mic Out (High/Low)
- 2 Banana Plug Speaker Connectors
- Built-in BBE Sonic Maximizer for both vocal and music
- 2 SpeakOn Speaker Connectors
- Pre-Input and Pre-Output for External Effort
- 115/230 Voltage for Worldwide Compatible

Specifications

- Integrated USB Audio Solution using C-Media CM106 Audio I/O Controller works for PC and Mac
- Maximum Output: 200W + 200W @ 8Ω Max
- Microphone Input Sensitivity: <20mV
- Music Input Sensitivity: 250mV / 47KΩ / 1kHz
- Microphone Frequency Response: 20Hz - 20 kHz / 3dB
- Music Frequency Response: 20Hz - 20 kHz / 3dB
- Microphone EQ characteristics: Treble: +/- 10dB (10kHz), Bass: +/- 10dB (100Hz)
- Music EQ characteristics: Treble: +/- 10dB (10kHz), Bass: +/- 10dB (100Hz)
- Key Control Range +/- 6 Half Tones
- Speaker Wattage Impedance: 4Ω - 8Ω
- Voltage: AC 115V - 230V Manual Select
- Rackmountable - kit included
- Dimensions: 17"W x 14"W x 6.5"H
- Weight: 33 lbs.
- 1 Year Manufacturer Warranty
- Designed in U.S.A.

INCLUDES

- Remote Control
- USB Driver Disc
- USB Cable
- 2 AAA Batteries
- RCA Cable
- Rackmount Kit

KJV-835 Rear Panel:

1. AC 115V/ 230V Input Select
2. AC 115V/230V Input
3. Fuse
4. AC Unswitch Output
5. Speakon Output
6. Microphone Output
7. Subwoofer Output
8. Line Output
9. Record Output
10. Effect Loop
11. Audio Inputs
12. Audio Outputs
13. Video Inputs
14. Video Outputs
15. #4, #5 Mic Inputs
16. USB to PC Inputs
17. Component Outputs
18. Component Inputs



Acesonic

AM-898

600-Watt Professional DSP Mixing Amplifier with Feedback Eliminator, Vocal Elimination, Signal Normalizer, Digital EQ, Echo & Reverb



Features

- Feedback Eliminator
- Vocal Eliminator
- Auto Level/ Balancing for Music and Vocal
- Digital Effect Processor
- 3-Band Music and 5-Band Microphone Equalizer
- Microphone Noise Gate
- 5 Microphone Inputs (3 front, 2 rear)
- RS-232 Serial Port PC Interface
- User Lock-Down Mode
- Subwoofer Signal Control
- Music and Microphone Balance
- Auto-Source Detection
- 5 Preset Memory Recall Buttons

- 600 Watts Maximum Power Output
- 4 Audio & Video Input Selections
- Microphone Volume, Music Volume and Effect Volume Control
- 11-Step Digital Key Control
- 5 Preset Memory Settings to Store Your Favorite Audio/ Effect Settings
- Subwoofer Reducer/ LPF
- Stereo Sound Balancing for Irregular Rooms
- Center Speaker Settings with Volume Control: Mic Only, Music Only, Mic + Music, or Auto Switch

Specifications

- 300 + 300 Watts Maximum Power Output @ 8Ω
- Supports Digital S/ PDIF Input (PCM 44.1KHz, 48KHz)
- 4 RCA A/V Inputs and 2 RCA A/V Outputs
- Dimensions: 17"W x 12.75"W x 5.75"H
- Weight: 28.3 lbs.
- 1 Year Manufacturer Warranty

INCLUDES

- Remote Control
- Power Cable

AM-898 Rear Panel:

1. Four A/V Inputs
2. Two A/V Outputs
3. Center Output
4. Remote Extension
5. SPDIF Digital Audio Input
6. Banana Audio Outputs
7. Subwoofer Output
8. Two Microphone Inputs
9. RS232 to PC Connecting Port



AM-888

500-Watt Dual Professional 32-Bit DSP
Mixing Amplifier with Echo / Reverb / BBE



Features

- Uses the latest generation dual DSP 32-Bit processors
- Maximum 500 Watt Power Output
- Power output 150W + 150W (8Ω), 250W + 250W @4Ω
- Uses Yamaha YSS-205F DSP Advanced Stereo Key Controller Chipset
- 15-Step key controller
- Onscreen Display for advanced settings
- Built-in high quality stereo digital echo
- 5 Microphone Inputs
- 4 pairs of banana speaker terminals (2 left + 2 right)
- Built-in BBE sound enhancement technology
- Dynamic range expander
- Large keypad Infrared remote controller
- Subwoofer output with subwoofer volume control
- Vocal Cancel (up to 90% of music) and Vocal Partner Function
- Echo Repeat, Echo Delay
- Reverb function
- 6 Types of DSP Sound Effects:
 1. Echo
 2. Echo+Reverb
 3. Stereo Echo + Reverb
 4. Delay + Reverb
 5. Stereo Delay + Reverb
 6. Vocal Reverb

Specifications

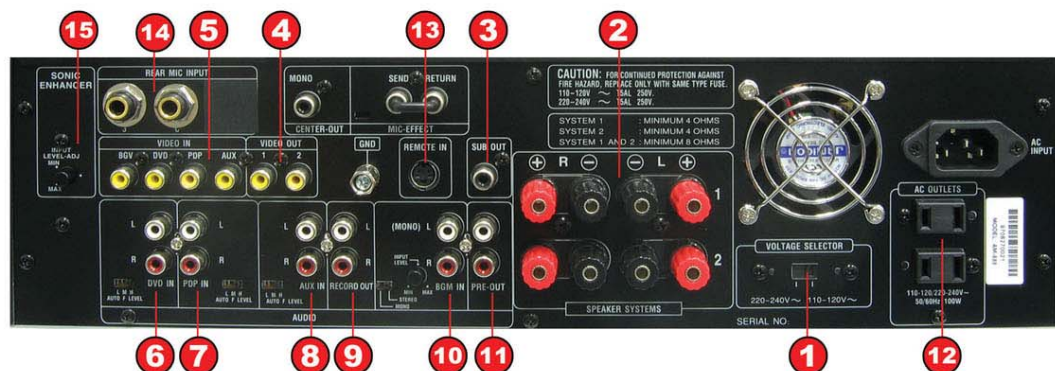
- 4 RCA Audio Inputs with automatic source selector capability
- 2 RCA Video Outputs
- 32-Bit A/D Converter
- 1 Microphone Effect terminal
- 1 Audio Pre-out Terminal
- 1 Recording output terminal for tape deck
- 1 Remote Input for remote extender
- 2 Switched Power AC Outlet
- 1 Remote Uplink (use BMB Code)
- 1 Background Video Input (BGV) Jack
- 2 Background Music Input (BGM) Jacks
- Background Music Input Level Control
- Mono/Stereo Input Switch
- Music Input sensitivity switch
- External Microphone Effect Jack (Input/Output)
- 110/220 Voltage Input Selector
- Dimensions: 17"W x 15"W x 5.75"H
- Weight: 24.7 lbs.
- 1 Year Manufacturer Warranty

INCLUDES

- Remote Control
- Power Cord

AM-888 Rear Panel:

1. Voltage Selector
2. Speakers Output Terminals
3. Sub Out Jack
4. Video Output Jacks
5. Video Input Jacks
6. DVD Input Jacks
7. PDP Input Jacks
8. AUX Input Jacks
9. Record Output Jacks
10. BGM Input Jacks
11. Pre-Out Output Jacks
12. AC Outlets
13. Remote Input Jack
14. Rear Mic Input Jacks
15. Input Level Adjuster





Features

- PC to USB Interface for pure-digital simultaneous Playback & Recording (Windows XP, Vista & 7)
- 2 Component Video Inputs and 1 Component Video Output for HD Video Signal
- Built-in BBE Sonic Maximizer for both vocal and music
- True Vocal Cancellation Function to remove up to 90% of lead vocal on any audio track
- Temperature-Active, Ultra-Low-Noise Fan for non-stop operation
- 4 Sets of Audio Outputs + USB to PC Recording Output
- Total 4 Audio/Video Inputs: DVD/BGM/USB/AUX
- 2 Component Video Inputs: DVD/BGM
- 1 Component Video Output
- 1 RCA Audio/Video Output
- PC Video Input: RCA/S-Video
- Auto Input Selector
- L/R/Multiplex Channel Output
- Music Low, Mid, High, Balance, Volume Controls
- Microphone Delay, Repeat, Echo, Low, High Volume Controls
- Microphone Volume Controls for 3 sets of 2 microphones
- 6 Microphone Inputs
- Master Microphone Control
- Master Echo Control
- Master Volume Control

- 4 S-Video Input
- 4 RCA Input
- 2 Component Video Input
- 1 Component Video Output, RCA Output, S-Video
- 4 Audio Outputs
- 2 Banana Plug Speaker Connectors
- 2 SpeakOn Speaker Connectors
- Subwoofer Audio Out

Specifications

- Integrated USB Audio Solution using C-Media CM106 Audio I/O Controller
- Maximum Output: 300W + 300W @ 8Ω Max
- RMS Output: 200W + 200W @ 4Ω RMS
- Microphone Input Sensitivity: <20mV
- Music Input Sensitivity: 250mV / 47KΩ / 1kHz
- Microphone Frequency Response: 20Hz - 20 kHz / 3dB
- Music Frequency Response: 20Hz - 20 kHz / 3dB
- Microphone EQ characteristics: Treble: ±10dB (10kHz), Bass: ±10dB (100Hz)
- Music EQ characteristics: Treble: ±10dB (10kHz), Bass: ±10dB (100Hz)
- ± 6 Step Key Control
- Speaker Wattage Impedance: 4Ω - 8Ω
- Voltage: AC 115V - 230V Manual Select
- Dimensions: 17" L x 14" W x 6.5" H
- Weight: 33 lbs.
- 1 Year Manufacturer Warranty

INCLUDES

- Remote Control
- USB Driver CD
- USB Cable
- Rack-mount Kit

AM-825 Rear Panel:

1. Voltage Selector
2. AC 115V/230V Input
3. Fuse
4. AC Unswitch Output
5. Speakon Output
6. Microphone Output
7. Subwoofer Output
8. Line Output
9. Record Output
10. Effector Loop
11. Audio Inputs
12. Audio Outputs
13. Video Inputs
14. Video Outputs
15. S-Video Input
16. PC Video Input
17. USB Port
18. Component Outputs
19. Component Inputs



AM-170

250-Watt Mixing Amplifier
with 3D Sound Enhancer

MIXING AMPLIFIERS



Features

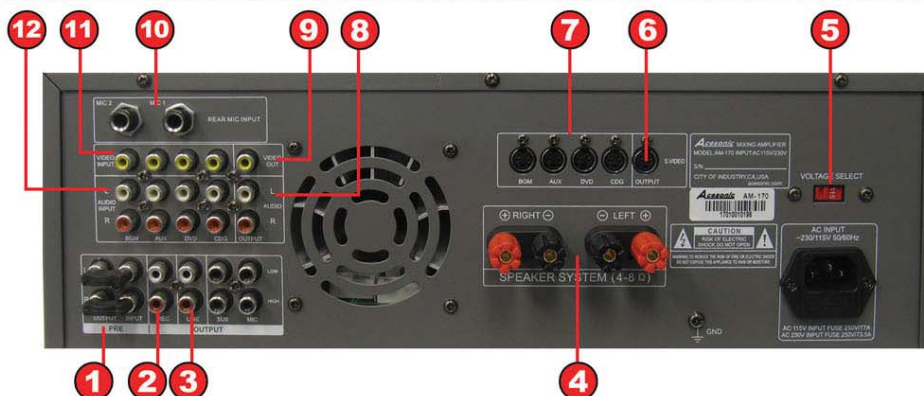
- 250-Watt Maximum Power Output @4Ω
- 4 Audio & Video Input Selections
- 3 Front & 2 Rear Microphone Inputs
- 12- Step Digital Key Control
- 3D Dynamic Sound Enhancement for Rich Sound Quality
- Master Music Volume Control
- Master Microphone Volume Control
- Individual Microphone Volume Controls
- Microphone Echo Volume, Repeat & Delay Control
- Microphone Bass, Mid-Range & Treble Adjustments
- Music Bass, Mid-Range & Treble Adjustments
- Multiplex Function
- Full Function Remote Control

Specifications

- Maximum Output: 80W + 80W @8Ω Max
- RMS Output (continuous): 125W + 125W @4Ω RMS
- Microphone Input Sensitivity: <20mV
- Music Input Sensitivity: 300mV
- Microphone Frequency Response: 20Hz - 20KHz/ 3dB
- Music Frequency Response: 20Hz - 20KHz/ 3dB
- Microphone EQ: Treble: +/- 5dB (10KHz), Bass: +/- 5dB (100KHz)
- Music EQ: Treble: +/- 5dB (10KHz), Bass: +/- 5dB (100KHz)
- Speaker Wattage Impedance: 4Ω - 8Ω
- Supply Voltage: AC 110V - 120V or AC 220V - 240V
- Dimensions: 16"L x 13"W x 5.75"H
- Weight: 17 lbs
- 1 Year Manufacturer Warranty

INCLUDES

- Remote Control
- Power Cord



AM-170 Rear Panel:

1. Effector Loop
2. Record Output
3. Line Output
4. Speaker Connectors
5. Voltage Selector
6. S-Video Output
7. S-Video Inputs
8. Audio Output
9. Video Output
10. Mic Inputs
11. Video Inputs
12. Audio Inputs

Acesonic

AM-600

Professional 600-Watt Dual Channel Amplifier



Features

- Professional 600-Watt Karaoke Amplifier
- Unbalanced RCA Input
- Balanced XLR Input
- Balanced 1/4" Cable Input
- Fan Cooled

Specifications

- Maximum Output: 300W + 300W @8Ω Max
- Two Channel Balanced/Unbalanced Inputs
- Individual Channel Volume Control
- Dimensions: 17"L x 13"W x 3.75"H
- Weight: 24 lbs
- 1 Year Manufacturer Warranty

INCLUDES

- Power Cord

AM-600 Rear Panel:

1. RCA Input
2. XLR Audio Output
3. Two 1/4" Inputs
4. Banana Audio Outputs



AM-145

80-Watt Mixing Amplifier with 4 AV Inputs



Features

- 80-Watt maximum power output
- Four A/V inputs selector - One front input for easy connection
- Microphone volume control
- Microphone bass and treble control
- Music bass and music treble control
- Music balance control
- Two 1/4" microphone inputs
- Music effect bypass switch
- Dynamic sound enhancer - Enhance a full range of frequencies

Specifications

- Maximum Output: 40W + 40W @ 8Ω
- 4 A/V inputs
- RCA line and sub outputs
- 115V-230V power input selector for worldwide compatibility
- Power AC 115-230V 50/60Hz input
- Dimensions: 17"W x 12"W x 5.75"H
- Weight: 16 lbs
- 1 Year Manufacturer Warranty

INCLUDES

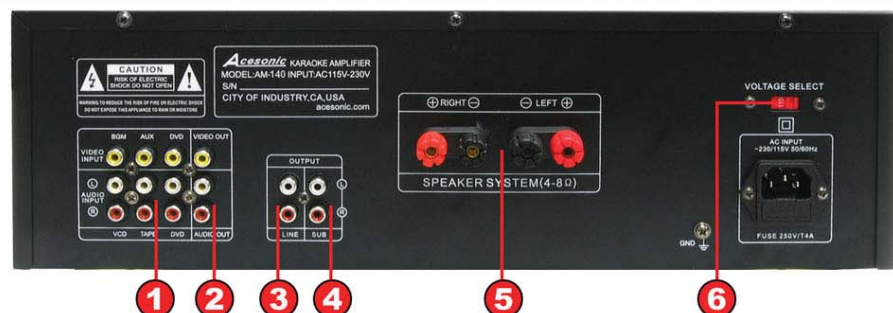
- Remote control
- 2 AAA Batteries
- RCA Cable
- Power Cord

VALUE LINE
PERFORMANCE & AFFORDABILITY

Front AUX Inputs

AM-140 Rear Panel:

1. Three A/V Inputs
2. One A/V Output
3. Line Audio Output
4. Line Sub Audio Output
5. Banana Audio Outputs
6. AC 115V/ 230V Input Select



KM-360

Professional Digital Mixer
with Feedback & Vocal Eliminator,
PC Interface & Microphone Noise Gate



Features

- Feedback Eliminator
- Vocal Eliminator
- Music Volume Auto Leveling
- Digital Effect Processor
- 5-Band Music and Microphone Equalizer
- 11-Step Digital Key Controller with 1/2 Tone Per Step
- Microphone Noise Gate
- Multiple-Channel Surround Sound Configuration
- 5 Microphone Inputs with 2 XLR Input Connectors
- S/PDIF Digital Input
- Control from PC via the RS-232 Serial Port
- User Lock-Down Mode
- Subwoofer Signal Control
- Center Speaker and Rear Speakers Signal Control
- Music and Microphone Balance
- Auto-Source Detection
- 4 Preset Memory Recall Buttons
- XLR Line Outputs

Specifications

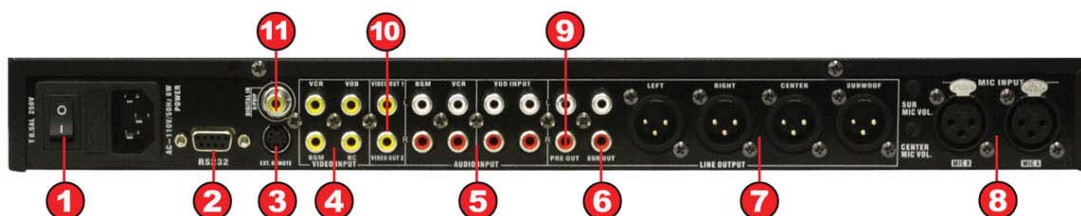
- Support digital S/PDIF input (PCM 44.1KHz, 48KHz)
- 4 RCA A/V inputs & 2 RCA A/V outputs
- 1 RCA Record output & 1 RCA Surround Sound Output
- 1 External Remote Control Signal Input
- 1 U Rack Mountable
- Dimensions: 16.75" L x 4.5" W x 1.75" H
- Weight: 8 lbs
- 1 Year Manufacturer Warranty

INCLUDES

- Remote control
- Power Cord

KM-360 Rear Panel:

1. Power Switch
2. Serial Port
3. Remote Extension
4. Four Video Inputs
5. Four Audio Inputs
6. 5.1 Surround Sound Audio Outputs
7. Four XLR Surround Sound Outputs
9. Pre Audio Output
10. Two Video Outputs



Acesonic®

Turn any PC, DVD Player, or MP3 Player into a Karaoke Machine

KM-112
Karaoke Mixer
with PC-to-USB Interface



BOOST
sound performance
simply by
turning on the
3D Sound Enhancer!

Features

- Total USB Convenience. Use with laptops & desktop with no sound card installation
- Ultra-Compact & Flexible Mixer with USB Computer Interface
- Left & Right Multiplex Stereo Control with a Flick of a Switch!
- Perform with a partner! Two line inputs, balanced XLR & unbalanced 1/4"
- Customize your Sound with Complete Microphone Treble, Bass & Echo controls
- Play from PC to USB and Record to PC
- Perfect for MSN and Skype

INCLUDES

- 1 Wired Microphone with 14' cable
- RCA-to-RCA audio cable (Connect from DVD Player)
- RCA-to-Mini Jack audio cable (connect from PC)
- USB Driver Disc (Compatible with Windows XP/Vista/7)
- USB Cable
- Rack Mount Kit
- Power Cable

Specifications

- Integrated USB Audio Solution using C-Media CM106 Audio I/O Controller
- Two 1/4" Microphone Inputs (front panel)
- Two XLR Balanced Inputs - Connect two XLR microphones, electric guitar, piano keyboard, or sound sources to the rear panel.
- Windows XP, Vista & 7 compatible
- USB port
- RCA Audio Input - Connect your music source from a PC, iPod, MP4 Player, or DVD Player.
- RCA Audio Output - Connect music output to your TV, home theater, or stereo system.
- Headphone jack input
- 115/230 Voltage Selection
- Dimensions: 11.5"L x 7"W x 1.75"H
- Weight: 3 lbs
- 1 Year Manufacturer Warranty

KM-112 Rear Panel:

1. Mic 1, Mic 2 XLR Inputs
2. Audio Output
3. Audio Input
4. PC USB Port
5. Power Input
6. Voltage Selector





Features

- Rechargeable
- 4 Replaceable Receiver/Transmitter Modules
- 4 Microphone Outputs with Individual Volume Controls
- UHF Band Quartz Lock for Drift Free Operation
- Receiver Power/RF/AF & Microphone Low Battery Indicators
- Front Antenna Provides Clear RF Reception
- 4 Individual XLR Mic Outputs and One 1/4" Mixed Output
- Professional Heavy-Duty Design / Rackmountable

Specifications

Receiver

- Carrier Wave Frequency Range: UHF 668-692MHz
- Frequency Response: 40Hz-18KHz
- Oscillation Mode: Quartz Controlled Fixed Frequency
- Carrier Wave Stability: 10PPM
- Switching Bandwidth: 24MHz
- Sensitivity: -105dB @ sinad=12dB
- S/N Ratio: >105dB
- T.H.D.: <0.5% @ 1KHz
- Image Rejection: 85dB typical
- Spurious Rejection: 75dB typical
- Working Distance: 200 ft
- Squelch Control: dual-squelch circuit
- AF Output Impedance: 2.2K Ω
- Max Output Level:
 - Balance: 0-400mv
 - Unbalanced: 0-200mv
- Display: LED
- Power Supply: External DC Power Supply, 0.8A, 12-18V DC
- Output Connector:
 - 4 XLR Balanced Socket
 - Unbalanced TRs 1/4" Socket
- Dimensions: 16.5"L x 8"W x 1.75"H
- Weight: 6.6 lbs

INCLUDES

- 2 Wireless Mics
- 2 Charging Base
- 2 Antennas
- Power Adapter
- Microphone Cable
- Battery AA x 4
- Rackmount Kit

 Rechargeable

Acesonic[®]

UHF-4000R

Professional 4-Channel Module
Rechargeable Wireless
Microphone System



Transmitter (Handheld)

- Transmitter Power: 30mW
- Spurious emission: <40dB (with carrier)
- Display: LED
- Battery Voltage: 1.5V x 2

UHF-2932

32-Channel Rechargeable Dual Wireless Microphone System with Infrared Syncing



INCLUDES

- Microphone Cable
- 2 Antennas
- Charging Base
- 2 Power Cables
- Rackmount Kit
- 2 AA Rechargeable Batteries

Rechargeable

Features

- Switchable, 16 Channels per Microphone (32 Total Channels)
- Microphone & Receiver Channels Auto-Sync via Infrared
- Two High Sensitive Microphones with LCD Indicators
- Noise Reduction Technology
- Rechargeable
- Dual Channel LCD Display
- Rackmountable - Need 2 machines to fit rack-mount

Specifications

- Frequency Band: UHF
- Receiver: Dual Channel PCB Module
- Frequency Range: 610-700 MHz
- Frequency Stability: PLL
- F/N Ratio: 80dB
- P/N Ratio: 80dB
- Output Connector: 1/4", 3-pin XLR
- Antenna: 2TNC PLUG Ω
- Frequency Response: 50-20,000 Hz
- S/N Ratio: 100dB
- T.H.D: 0.8%
- Operating Distance: 300 ft
- Working Range: - 200 ft under typical conditions - 260 ft line-of-sight, outdoor
- Power: DC 12V
- Dimensions: 8"L x 6"W x 1.5"H
- Weight: 2 lbs
- 1 Year Manufacturer Warranty

Transmitter

- Frequency Range: 610-700 MHz
- Frequency Stability: PLL
- Modulation Mode: FM
- Adjustment Depth: 35 KHz (Max)
- Transmitting Power: \leq 10dBm RF
- Squelch: $>$ 50dB
- Battery: 1.5V* AA x 2 per mic



UHF-2700

Dual UHF Wireless Microphone System



Features

- Dual-Channel professional wireless microphone system
- UHF Band Quartz lock for drift free operation
- 2 wireless handheld microphones with enhanced muting and noise reduction technology
- Individual microphone volume controls for precise vocal balancing
- 2 antennas provide clear RF reception
- Rack Mountable - Need 2 machines to fit rack-mount

Specifications

Receiver

- Carrier wave frequency range: UHF 619-688.85MHz
- Oscillation Mode: Quartz controlled fixed frequency
- Carrier Wave Stability: 10PPM
- Sensitivity: -105dB @ $\sinad=12$ dB
- S/N Ratio: $>$ 105dB
- T.H.D.: $<$ 0.5% @ 1KHz
- Image rejection: 85dB typical
- Spurious rejection: 75dB typical
- AF Output Impedance: 2.2K Ω

- Maximum Output:
 - Level Balanced: 0 - 400mv
 - Unbalanced: 0 - 200mv
- Display: LED Display Unit
- Power Supply: External DC Power Supply - 0.35A - 12-18V DC
- Output Connector:
 - 1 XLR Balanced Socket - Unbalanced 1/4"
- Dimensions: 16.5"L x 7.67"W x 1.75"H
- Weight: 1.25 lbs

INCLUDES

- 2 Wireless Mics
- Microphone Cable
- Rackmount Kit

UHF-1100

10-Channel UHF Wireless Microphone with Infrared Syncing



Features

- 10 Selectable Channels with Advanced Channel Scanning Function
- Easy Infrared Syncing instantly matches microphone and receiver channel
- Noise Reduction Technology: High Signal/Noise ratio and super low distortion

Specifications

Receiver

- Working distance: 200 ft on Line-Of-Sight
- S/N Ratio: $>$ 105dB
- Oscillation Mode: Phase-locked Loop Control
- Maximum Output:
 - Balanced: 0-400mV
 - Unbalanced: 0-200mV
- Output Connector:
 - 1 XLR Balanced Socket - Unbalanced 1/4"
- Frequency Range: 668-692 MHz
- Power Supply: External DC Power Supply, 0.35A, 12-18V DC
- Handheld Microphone Batteries: AA 1.5V x 2
- Battery Life: 4-6 hours
- Dimensions (Receiver): 7"L x 4"W x 1.5"H
- Weight: 2 lbs



INCLUDES

- 1 Handheld Microphone
- Power Cord
- Microphone Clip
- Microphone Cable
- Carrying Case

UHF-1208XR

Diversity 1000-Channel Rechargeable
Dual Wireless Microphone System
with Infrared Syncing



Features:

- Rechargeable
- 1000 switchable channels with Auto-Channel Selection function
- Easy Infrared syncing for quick channel matching
- Diversity receiver
- One button microphone operation
- Module removable microphone head
- Dual identical microphone design
- Two high sensitive microphones with noise reduction technology
- Individual microphone volume controls
- Dual channel information LCD display
- Front antenna provides clear RF reception
- Rackmountable
- Dent-resistant microphone grille

Specifications:

Receiver

- Carrier Wave Frequency Range: UHF 668-692MHz
- Oscillation Mode: Phase-locked Loop Controlled
- Carrier Wave Stability: 10PPM
- Switching Bandwidth: 24MHz
- Frequency Space: 25KHz
- Sensitivity: -105dB @ sinad=12dB
- S/N Ratio: >105dB
- T.H.D.: <0.5% @ 1KHz
- Image Rejection: 75dB typical
- Spurious rejection: 85dB typical
- Frequency Responses: 40Hz-18KHz
- Working Distance: 200 ft
- Squelch Control: dual-squelch circuit

- AF Output Impedance: 2.2K Ω
- Max Output Level:
 - Balance: 0-400mv
 - Unbalanced: 0-200mv
- Display: LCD
- Power Supply: External DC Power Supply, 0.5A, 12-18V DC
- Output Connector:
 - 2 XLR Balanced Socket
 - Unbalanced TRs 1/4" Socket
- Dimensions: 16.5"L x 7.87"W x 1.75"H
- Weight: 5.5 lbs

Transmitter

- Transmitter Power: 30mW
- Spurious emission: <40dB (with carrier)
- Display: LCD
- Battery Voltage: 1.5V x 2



INCLUDES

- 2 Wireless Mics
- Charging Base
- 2 Antennas
- Power Adaptor
- Microphone Cable
- Battery AA x 4
- Rackmount Kit

Rechargeable

Aceso[®]

VHF-8012

Dual Rechargeable Wireless Microphone System



Features

- VHF Band Quartz Lock for Drift-Free Operation
- 2 Wireless Handheld Microphones with Enhanced Muting and Noise Reduction Technology
- Signal Status Display
- Individual Volume Control for Precise Vocal Balancing
- Rack-mountable (Kit included)

Specifications

Receiver

- Receive Mode: Crystal Frequency Lock
- Frequency Range: VHF Band (180 - 250 MHz)
- Quartz Lock for Drift free operation
- Frequency Stability: 15 PPM
- Sensitivity: 3uV 30dB S/N
- Signal to Noise Ratio: 60dB
- Audio Output: 0 - 0.5V/4.7K
- Output Connectors:
- 2 XLR Unbalanced & 1/4" Balanced
- Power: AC 90/240 (10%)
- Dimensions: 13.75"L x 8.5"D x 2"H
- Weight: 3.3 lbs

Transmitter

- Frequency Range: VHF Band (180 - 250 MHz)
- Quartz Lock for Drift free operation
- Frequency Stability: 15 PPM
- Modulation Mode: FM
- Modulation Depth: 10 KHz
- Emission Power: 30 mV max
- Harmonic Suppression: 40dB
- Battery: AA
- Antenna: Built in
- Battery current: 25 - 30mA



INCLUDES

- 2 Wireless Mics
- Microphone Cable
- Rackmount Kit
- Power Cable
- 4 AA Rechargeable Batteries

VHF-1000

Wireless Microphone System



Available in two frequencies. Please order either the red or blue band. If you are ordering 2 microphones, please select "One of Each" frequency.

Features

- Professional VHF Wireless Microphone System
- VHF Band Quartz Lock for Drift Free Operation
- 1 Wireless Handheld Microphone with Enhanced Muting, Noise Reducing Functions
- Rechargeable 9V Battery & Charger Included
- Individual Volume Control for Precise Vocal Balancing
- Antenna Provides Clear RF Reception

Specifications

- Frequency range: VHF band (180 - 300MHz)
- Quartz lock for drift free operation
- Frequency stability: 15 PPM
- Sensitivity: 3uV
- Signal to noise ratio: 60dB
- Max sound pressure >=120dB

Output connector:

- 1/4" Unbalanced (for separate or mixed signals)
- Battery: 9V
- Dimension of receiver: 6"L x 4"W x 1"H
- Weight: 3 lbs



INCLUDES

- 1 Wireless Mic
- Power Adapter
- Microphone Cable
- 9V Battery Charger
- 9V Battery





HM-708

Professional Microphone with Volume Controller

Features

- On/Off Switch
- 3 Level Volume Controller
- Cardioids polar pattern picks up the most sound from the front of the microphone and some sound from the sides.
- Steel mesh ball grill with integral "pop" filter reduces explosive breath sounds and wind noise

Specifications

- Sensitivity - 72.5 dB
- Frequency Response 50Hz - 16KHz
- Impedance: 600Ω
- Lifetime Manufacturer Warranty

INCLUDES

- 15ft Microphone Cable (XLR-to-¼")
- Deluxe Microphone Carrying Case



PX-88

PerformMax Professional Dynamic Vocal Microphone

Features

- On/Off Switch
- Frequency response tailored for vocals with brightened midrange and bass rolloff
- Uniform cardioid pickup pattern isolates the main sound source and minimizes background noise
- Pneumatic shock-mount system cuts down handling noise
- Effective, built-in spherical wind and pop filter

Specifications

- Type: Dynamic (moving coil)
- Frequency Response: 50 to 14,000 Hz
- Polar Pattern: Unidirectional (cardioid)
- Open Circuit Voltage: -54.8 dBv (1.85 mV)
- Impedance: 150 (300 actual)
- Polarity: Positive pressure on diaphragm produces positive voltage on pin 2 with respect to pin 3
- Connector: 3-pin professional audio connector (male XLR type)
- Lifetime Manufacturer Warranty

INCLUDES

- 14ft Microphone Cable (XLR-to-¼")
- ¼" to Mini Jack Adaptor



WIRED MICROPHONES

SX-88

PerformMax Professional Dynamic Vocal Microphone

Features

- On/Off Switch
- Frequency response tailored for vocals with brightened midrange and bass rolloff
- Uniform cardioid pickup pattern isolates the main sound source and minimizes background noise
- Pneumatic shock-mount system cuts down handling noise
- Supplied with break-resistant stand adapter which rotates 180 degrees

Specifications

- Type: Dynamic (moving coil)
- Frequency Response: 50 to 15,000 Hz
- Polar Pattern: Unidirectional (cardioid)
- Open Circuit Voltage: -54.8 dBv (1.85 mV)
- Impedance: 150 (300 actual)
- Polarity: Positive pressure on diaphragm produces positive voltage on pin 2 with respect to pin 3
- Connector: 3-pin professional audio connector (male XLR type)
- Lifetime Manufacturer Warranty

INCLUDES

- 14ft Microphone Cable (XLR-to-¼")
- ¼" to Mini Jack Adaptor



MP-703

Wired Microphone

Specifications:

- Type: Hyper - Cardioid
- Frequency Response: 60Hz - 13,000 Hz
- Impedance: 400Ω
- Sensitivity: -74dB +/- 3dB
- Sound Pressure Level: More than 130 dB(SPL)
- Color: Metallic Gray

INCLUDES

- 14ft Microphone Cable (XLR-to-¼")



Acesonic®

RULE THE

World's First "ON-the-GO" Blu-ray Karaoke System!



PK-2000

160-Watt Portable
Blu-ray Disc™ Karaoke System
with Built-in Dual VHF Microphones



Features

- 160-Watt maximum output amplifier & stereo speakers with two 3" tweeters & two 6.5" mid-range drivers.
- Multi-format player supports: Blu-ray™, BD-ROM, BD-R, BD-RE, BD-R DL, BD-RE DL, DVD, DVD±R, DVD+RW, CD-DA, CD-R, CD-RW, VCD, CD+G, Audio CD and data discs.
- Compatible formats: MP3, MP3G, WAV, WMA, MPEG-1, MPEG-2 (MPG/VOB), MPEG-4 (AVI), DivX, XviD, RMVB, DAT, iSO, M2TS, MKV, MOV and JPEG files
- Play all your media from discs or USB drives in HD quality up to 1080p.
- Built-in dual VHF wireless microphones.
- Four 1/4" microphone inputs.
- 7-band equalizer to fine-tune your music.
- 120/240V & NTSC/PAL compatible for worldwide use.
- 1 HDMI output.
- 1 component video output.
- 1 headphone output.
- External speaker output terminals.
- Compact design.
- Handles and wheels for easy storage and transportation.
- Mounting hole for stand.

Specifications

- Power Output: 40W + 40W RMS
- Total Harmonic Distortion: 0.5%
- Input Impedance: 47K
- Input Sensibility: 25mV
- Max Input Signal: 2.5Vp-p
- Signal-to-Noise: 80dB
- Music EQ: 60Hz/200Hz/400Hz/1KHz/3KHz/6KHz/16KHz
- Frequency Response: 20Hz - 20KHz (± 3dB)
- Mic Treble Adjustment: ± 10dB
- Mic Bass Adjustment: ± 10dB
- Mic Input Sensitivity: 20mV
- Echo Delay: 200ms
- Dimensions: 18.5" x 14" x 20.5"
- Weight: 45.8 lbs



INCLUDES

- 2 Wireless Mics
- Power Cable
- Remote Control



Roadwiz®

**Portable Multi-Format Sound System
with Digital Recording**



Features

- 80-Watt RMS Amplifier & stereo speakers with two 3" tweeters & two 6.5" mid-range drivers.
- CD+G to MP3G Converter
- Vocal mixer
- Digitally record your performance & live sound into an SD card. Record directly to MP3G.
- Multi-format player supports CD, CD+G, VCD, DVD, MP3G, MP3, CD-R/CD-RW, DVD-R/DVD+R.
- 7-band equalizer to fine-tune your music.
- Two 1/4" microphone inputs
- Two XLR microphone inputs
- Guitar input
- Keyboard input
- 3 Aux RCA inputs
- 1 Aux RCA output
- Surround Sound Audio output for multi-format player
- 1 S-Video output
- 1 component video output
- 1 optical audio output
- 1 headphone output
- External speaker output terminals
- Built-in wheels & handle bars for easy transportation.
- Cooling fan built-in

Specifications

- Power Output: 40W + 40W RMS
- Total Harmonic Distortion: 0.5%
- Input Impedance: 47K
- Input Sensibility: 25mV
- Max Input Signal: 2.5Vp-p
- Signal-to-Noise: 80dB
- Music EQ: 60Hz/200Hz/400Hz/1KHz/3KHz/6KHz/16KHz
- Frequency Response: 20Hz - 20KHz (± 3dB)
- Mic Treble Adjustment: ± 10dB
- Mic Bass Adjustment: ± 10dB
- Mic Input Sensitivity: 20mV
- Echo Delay: 200ms
- Dimensions: 18.5" x 12" x 24"
- Weight: 50 lbs

INCLUDES

- Power Cable
- Remote Control



Blu-Thunder®

Blu-ray & Multimedia Karaoke System

System Includes

- BDK-2000 Blu-ray Disc Multimedia Karaoke Player
- KJV-835 400-Watt Professional Vocal Mixing Amplifier with 3.5" LCD Monitor/MP3G Player & Recorder
- SP-R400 300-Watt Rackmountable Speaker Roadcase
- UHF-2932 Dual Rechargeable 32-Channel UHF Microphones with Infrared Sync
- 16 AWG Speaker Wire 50 ft



Acesonic®

MICROPHONE STANDS, CLIPS & CABLES

**MS-430**

Dual-Purpose Boom Microphone Stand

- Use as a regular microphone stand and a boom microphone holder
- Two upper attachments allow you to switch between the regular microphone holder and boom arm quick and easily
- Adjust height and angle for hands-free operation
- Lightweight makes it optimum for travel when you go to shows or other events.

**MS-428**

5 ft Adjustable Round-Based Floor Microphone Stand with 2 Mic Holders

**MS-429**

Table Top Microphone Holder

**K-413**

Microphone Clip for Wired Mics

**K-415**

Microphone Clip for Wireless Mics

**MC-815**

15 ft XLR-to-1/4" Microphone Cable

**MC-820**

Professional 15 ft female XLR-to-1/4" Microphone Cable

**QT-805**

5 ft 1/4"-to-1/4" Audio Cable

SPEAKER STAND, MOUNT & WIRES

**SS-689**

Professional Heavy Duty Speaker Stands (Pair)

- 2 Steel Constructed Universal Mounting Bracket Included
- Height: 36"-72"
- Weight: 15 lbs each
- Load Capacity: 88 lbs (40Kg) ea

**CA-B615**

15 ft - 18 AWG Banana -1/4" Speaker Cable

- Industry standard banana connector to 1/4" connector
- Works with all speakers requiring banana 1/4" connection
- 15 ft length
- 18 AWG high performance speaker cable provides the highest fidelity
- Can handle in excess of 600 watt outputs
- Extra rubber insulation to avoid crosstalk and damage

**BB-815**

15 ft -18 AWG Speaker Cable with Dual Banana Connector

- Industry standard banana connector to 1/4" connector
- Works with all speakers requiring banana 1/4" connection
- 15 ft length
- 18 AWG high performance speaker cable provides the highest fidelity
- Can handle in excess of 600 watt outputs
- Extra rubber insulation to avoid crosstalk and damage

**QQ-215**

15 ft -12 AWG Speaker Cable with 1/4" to 1/4" Jack Connector

- Industry standard 1/4" to 1/4" male connector
- 15 ft length
- 12 AWG high performance speaker cable provides the highest fidelity
- Can handle in excess of 600 watt outputs
- Extra rubber insulation to avoid crosstalk and damage

**NB-901**

Speaker Mount

- Provides ceiling or wall mounting for speakers
- Compatible with most speakers
- Wall Mounting Screws are not included
- Speaker mount can be used for both ceiling and wall mount

TV/ MONITOR STAND



LCD-1

TV/ Monitor Stand

- 4 steps adjustable height (3ft-4.2ft)
- 5 wheels for easy maneuvering
- Able to rotate 360° & tilt 180°
- Able to bolt to floor with floor clamps
- Sleek all stainless steel
- Easily assembled
- Able to mount up to 20" LCD monitors
- Fits VESA 75mm/100mm TV mounts
- Lightweight (12lbs)

*TV not included

ROADCASE



SP-R400

300-Watt Rackmountable Speaker Road Case

- 300-Watt Max Output (150W+150W)
- Houses two 8" woofers and four 2" tweeters
- 19" x 11.5" Space with front and back opening
- 2 speaker terminals
- Road Case Dimension : 30" x 21" x 18"
- Weight: 67lbs

CD ORGANIZERS & SONGBOOKS



Top-Loading Nonstick Song Book Sheet Protector
3-Hole Binder



Deluxe Karaoke Song Book with 100 Sheet Protectors

MEMORY CARD READER & SD CARDS



32-In-One USB 2.0 Memory Card Reader

- Supports USB 2.0 up to 480Mbps/sec data transfer rate
- Support SDHC (Secure Digital High Capacity, SD 2.0) up to 32GB SD Card
- USB connection cable included
- No External power required
- LED light indicator
- Full "Plug & Play", hot swapping and high speed transfer
- Convenient, portable, shock and heat resistant
- Compatible with: Win98/ME/2000/XP/Mac OS



(SDHC)

- Class 4 - Minimum sustained data transfer speed of 4MB/sec
- Includes Power CD+G Player Pro for Windows



MicroSD Cards w/ Adapter & Power CD+G Player Pro for Windows

- Universally compatible
- Comes in 4, 8 & 16GB

RCA CABLES



CA-306

6 ft 3 RCA to 3 RCA Gold Plated A/V Cable



CA-312

12 ft 3 RCA to 3 RCA Gold Plated A/V Cable

TAMBOURINE



Add a little more fun while you're having karaoke night!

*comes in assorted colors

MIC WIND SOCKS



- The best tools to eliminate unnecessary pop and wind through microphones
- Two wind screens in each pack
- Fits most wired or wireless vocal microphones
- Comes in a vacuum sealed package
- Sterilized

RECHARGEABLE BATTERIES & CHARGER



9V



AA



9V Battery Charger

Acesonic®

Club System Packages

We'll take the guesswork out of building a system that'll satisfy anybody. Call us and see what we can build for you!

Ultimate Professional Power & High Definition Packaged System!

Blu-ray Multimedia Karaoke Player with 400-Watt Portable System & UHF Wireless Mics

System Includes

- BDK-2000 Blu-ray Disc Multimedia Karaoke Player
- PS-420 400W Professional 10" Powered Stereo Speaker System
- UHF-2700 UHF Dual Wireless Microphone System



600-Watt Amplifier, DSP Mixer + Diamond Speaker Professional Sound System

System Includes

- KM-360 Professional DSP Mixer
- AM-600 Professional 600W Dual Channel Amplifier
- UHF-4000R Professional Rechargeable 4-Channel Module Wireless Microphone System
- (2) Diamond SP-582 250W Professional Speakers



MP3G Encoder & Player + 250-Watt Mixing Amplifier, Speakers & Wireless Microphones

System Includes

- DGX-210 Multi-Format Player with Digital Recording & CDG to MP3G Converter
- AM-170 250W Professional Mixing Amplifier
- SP-280 120W Speaker System
- UHF-2932 Rechargeable Wireless Microphone System



600-Watt Professional Mixing Amplifier + Speaker Package

System Includes

- AM-898 600W DSP Mixing Amplifier
- SP-450 300W Professional Speaker System
- UHF-1208XR Rechargeable Diversity 1000-Channel Dual Wireless Microphone System
- 16 AWG Speaker Wire 100ft

Acesonic[®] USA
161 S. 8th Ave., City of Industry, CA 91746